


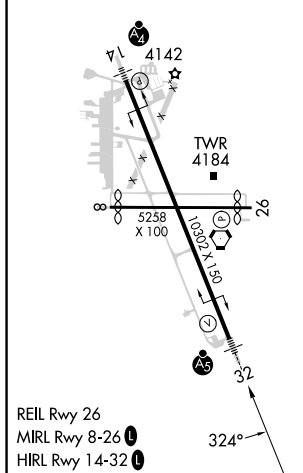
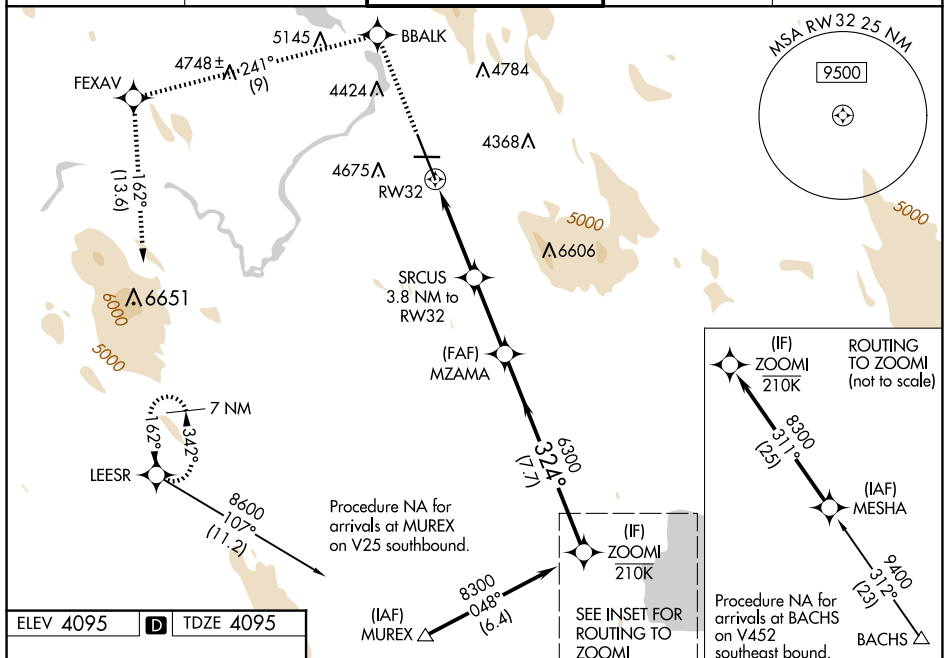


WAAS CH 70702 W32A	APP CRS 324°	Rwy Idg 10302 TDZE 4095 Apt Elev 4095
--	------------------------	--

RNAV (GPS) RWY 32
CRATER LAKE/KLAMATH RGNL (LMT)

RNP APCH - GPS.  Baro-VNAV NA. Circling NA for Cat D northeast of Rwy 14-32.  For inop ALS, increase LPV all Cats visibility to 1% SM, LPV* (CG 235) all Cats visibility to RVR 4500, LNAV/VNAV all Cats visibility to 1% SM, and LNAV Cat C/D visibility to 2% SM.		MALSR 	MISSED APPROACH: Climb to 8600 direct BBALK and on track 241° to FEXAV and on track 162° to LEESR and hold. *Missed approach requires minimum climb of 235 feet per NM to 6100.	
ATIS 126.5 263.0	KINGSLEY APP CON* 123.675 270.8	KINGSLEY TOWER* 133.975 (CTAF) 0 257.8	GND CON 121.9 348.6	UNICOM 122.95



8600 ↑		BBALK ✦		tr 241°		FEXAV ✦		tr 162°		LEESR ✦		MZAMA		ZOOMI	
				2.3 NM to RW32		3.8 NM to RW32		6300		5360		6300		8300	
				RW32										GP 3.00° TCH 55	
				2.3 NM		1.5 NM		3 NM				7.7 NM			
CATEGORY		A		B		C		D							
LPV DA*				4387/24		292 (300-½)									
LPV DA				4644/60		549 (600-1¼)									
LNAV/VNAV DA				4705-1⅜		610 (700-1⅜)									
LNAV MDA		4900/24 805 (900-½)		4900/40 805 (900-¾)		4900-1⅞		805 (900-1⅞)							
C CIRCLING		4900-1 805 (900-1)		4980-1¼ 885 (900-1¼)		5420-3 1325 (1400-3)		5680-3 1585 (1600-3)							