

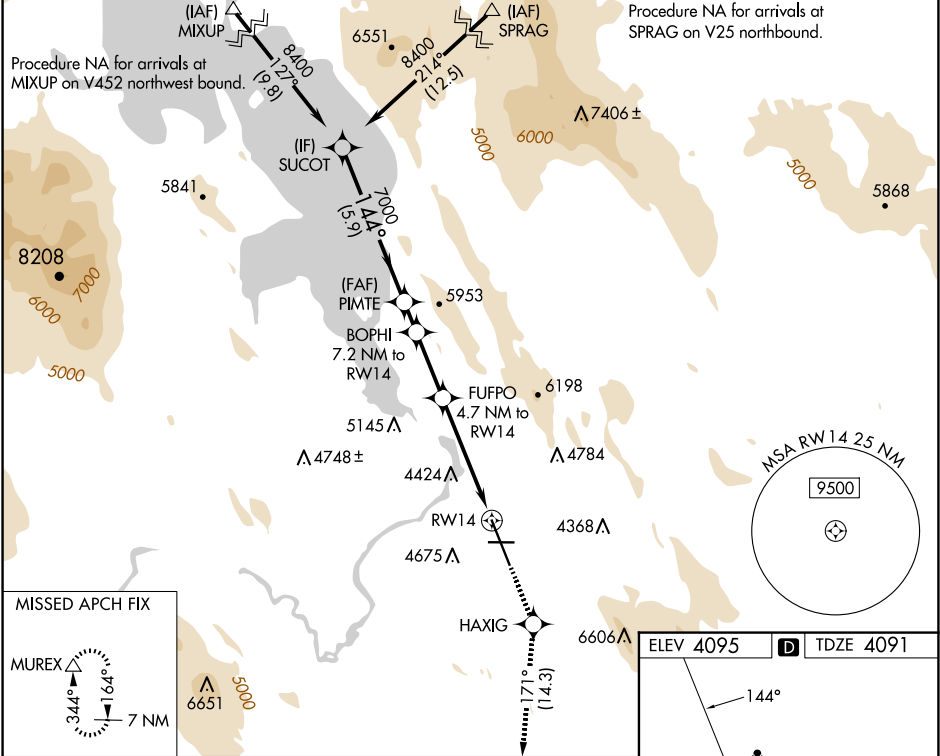
WAAS CH <b>58001</b> <b>W14A</b>	APP CRS <b>144°</b>	Rwy Idg TDZE Apt Elev	<b>10302</b> <b>4091</b> <b>4095</b>
----------------------------------------	------------------------	-----------------------------	--------------------------------------------

RNAV (GPS) RWY 14

CRATER LAKE/KLAMATH RGNL (LMT)

RNP APCH - GPS.	MALSF	MISSED APPROACH: Climb to 9400 direct HAXIG and track 171° to MUREX and hold, continue climb-in-hold to 9400.
For inop ALS, increase LNAV Cats C and D visibility to 2½ SM.		
⚠ Circling NA for Cat D northeast of Rwy 14-32.		

ATIS <b>126.5 263.0</b>	KINGSLEY APP CON★ <b>123.675 270.8</b>	KINGSLEY TOWER★ <b>133.975</b> (CTAF) <b>0 257.8</b>	GND CON <b>121.9 348.6</b>	UNICOM <b>122.95</b>
----------------------------	-------------------------------------------	---------------------------------------------------------	-------------------------------	-------------------------



SUCOT	PIMTE	BOPHI	FUFPO	HAXIG	MUREX
8400	7000	7.2 NM to RW14	4.7 NM to RW14	171°	△
GP 3.20° TCH 53	7000	6600	5740	2.3 NM to RW14	
5.9 NM	1.2 NM	2.5 NM	2.4 NM	2.3 NM	
CATEGORY	A	B	C	D	
LPV DA	4650-1½ 559 (600-1½)				
LNAV MDA	4920-¾ 829 (900-¾)	4920-1 829 (900-1)	4920-2 829 (900-2)		
CIRCLING	4920-1¼ 825 (900-1¼)	4980-1¼ 885 (900-1¼)	5420-3 1325 (1400-3)	5680-3 1585 (1600-3)	

