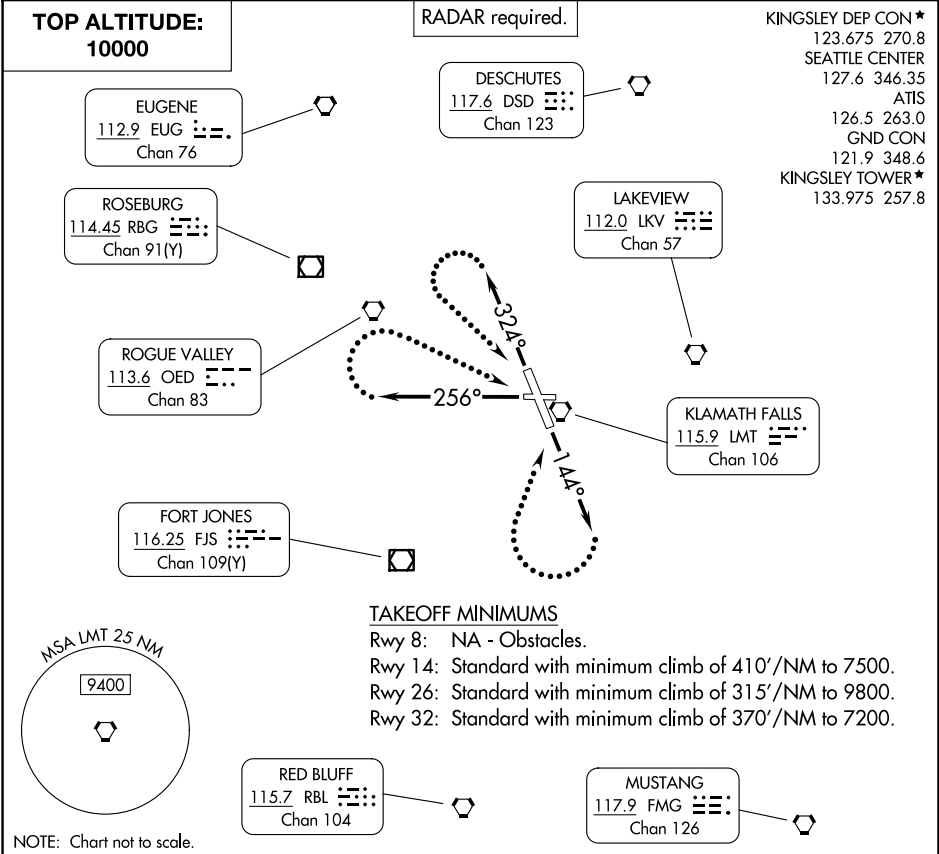


KINGSLEY SEVEN DEPARTURE

AL-473 (FAA)

CRATER LAKE/KLAMATH RGNL (LMT')
KLAMATH FALLS, OREGON



NW-1, 10 JUL 2025 to 07 AUG 2025

NW-1, 10 JUL 2025 to 07 AUG 2025

DEPARTURE ROUTE DESCRIPTION

TAKEOFF RUNWAY 14: Climb on heading 144° (or ATC assigned heading 144° CW 323°).
Thence

TAKEOFF RUNWAY 26: Climb on heading 256°. Thence

TAKEOFF RUNWAY 32: Climb on heading 324°. Thence

. . . . for vectors to assigned route. Maintain 10000. Expect clearance to filed altitude
five minutes after departure.

LOST COMMUNICATIONS

If not in contact with Seattle Center/Kingsley Approach Control after passing 10000 or
assigned altitude:

TAKEOFF RUNWAY 14: Climbing right turn direct LMT VORTAC. Thence

TAKEOFF RUNWAY 26: Climbing right turn direct LMT VORTAC. Thence

TAKEOFF RUNWAY 32: Climbing left turn direct LMT VORTAC. Thence

. . . . on assigned route.