


HI-TACAN RWY 14

VORTAC LMT 115.9 Chan 106	APCH CRS 134°	Rwy ldg 10,302 TDZE 4091 Arpt Elev 4095
---	-------------------------	---

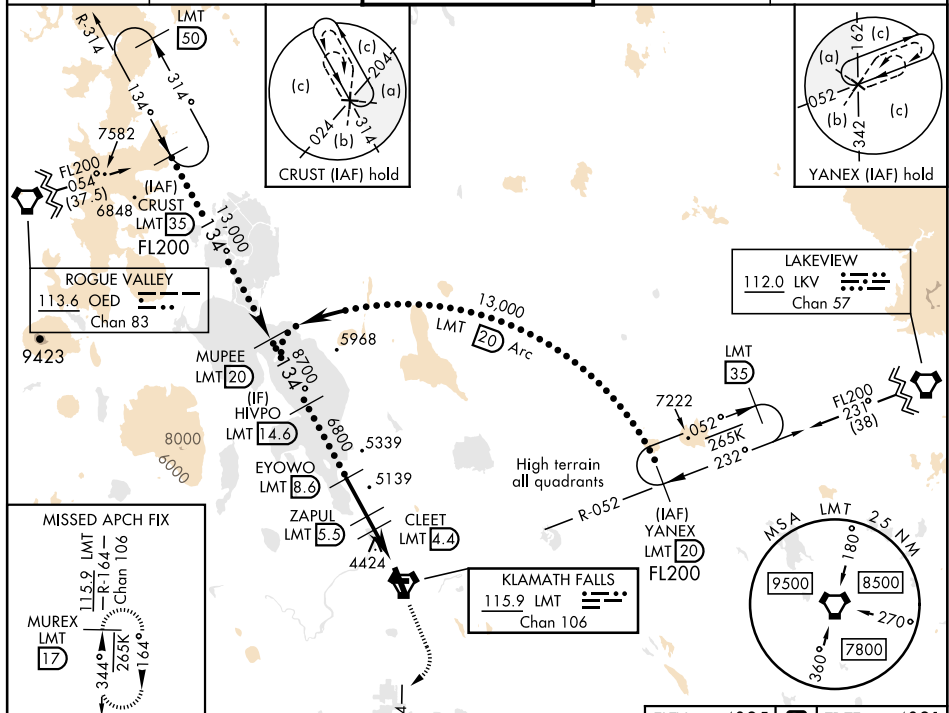
[USAF]

CRATER LAKE/KLAMATH RGNL (KLMT)

▼ * When ALS inop increase vis to 2½ miles.
** Circling not authorized for CAT DE
NE of Rwy 14-32.

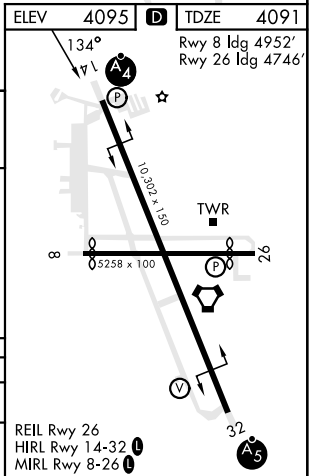
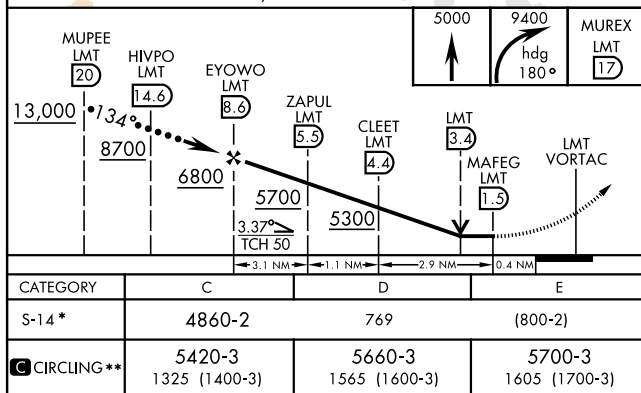
MALSF  MISSED APPROACH: Climb to 5000 then climbing right turn to 9400 on heading 180° and LMT VORTAC R-164 to MUREX/LMT 17 DME and hold. Continue climb-in-hold to 9400.

ATIS 126.5 263.0	KINGSLEY APP CON 123.675 270.8	KINGSLEY TOWER ★ 133.975 (CTAF) 257.8	GND CON 121.9 348.6	UNICOM 122.95
----------------------------	--	---	-------------------------------	-------------------------



NOT FOR CIVIL USE

EMERG SAFE ALT 100 NM 16,400



HI-TACAN RWY 14