

VOR/DME RWY 30

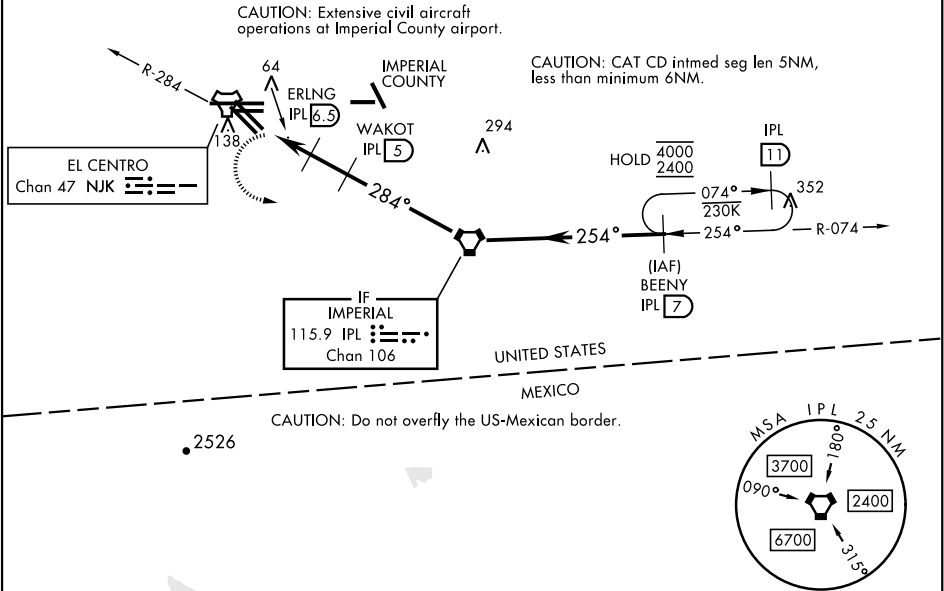
VORTAC IPL 115.9 Chan 106	APCH CRS 284°	Rwy Idg TDZE -42 Arpt Elev -42
---	-------------------------	--

[USN]

EL CENTRO NAF (VRACIU FLD) (KNJK)

▼ Visibility reduction by helicopters NA. Procedure NA at night.		MISSED APPROACH: Climb to 600, then climbing left turn to 2400, intercept IPL VORTAC R-074 to BEENY and hold.		
ATIS ★ 269.275	APP CON/DEP CON 128.55 292.2	TOWER ★ 119.1 360.2	GND CON 121.9 254.35	CLNC DEL 340.2

Rwy 30: 20:1 visual area penetrated by Fence, lit, 289 ft from thld, 213 ft right of course, 8 AGL/-34 MSL
Fence, 199 ft from thld, 305 ft right of course, 8 AGL/-34 MSL
Fence, 504 ft from thld, 3 ft right of course, 8 AGL/-34 MSL



EMERG SAFE ALT 100 NM 17,000 from NJK TACAN				
600 ↑	2400 ↘	IPL R-074	BEENY IPL 7	
VORTAC				
WAKOT IPL 5				
284° 254° 2400				
1500				
ZALIG IPL 8				
ERLING IPL 6.5				
1100				
2.94° TCH 50				
0.5 1.5 NM 1.5 NM				
CATEGORY	A	B	C	D
S-30	380-1 422 (500-1)	380-1¼ 422 (500-1¼)		
CIRCLING	480-1 522 (600-1)	480-1½ 522 (600-1½)	520-2 562 (600-2)	
HIRL Rwy 8-26, 12-30				

VOR/DME RWY 30

SW-3, 10 JUL 2025 to 07 AUG 2025

SW-3, 10 JUL 2025 to 07 AUG 2025