

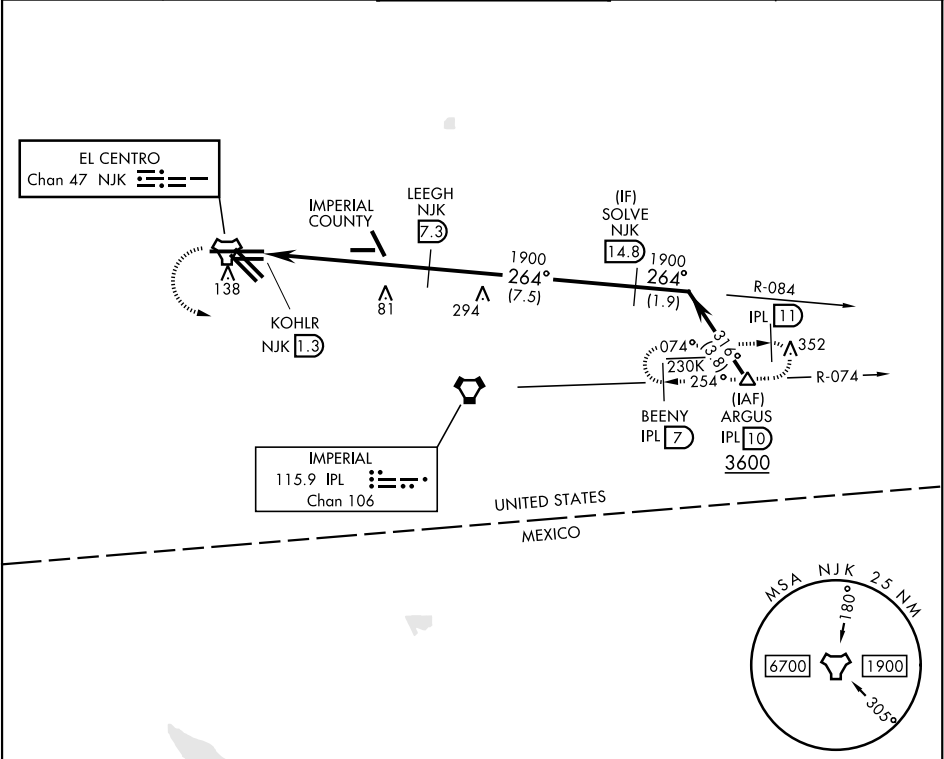
TACAN RWY 26

TACAN	NJK	APCH CRS	Rwy Idg
Chan	47	264°	TDZE -46
			Arpt Elev -42

[USN]

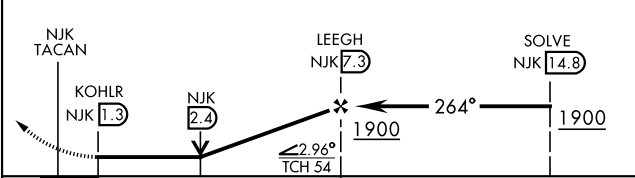
EL CENTRO NAF (VRACIU FLD) (KNJK)

Circling to Rwy 30 not authorized at night.		MISSED APPROACH: Climb to 500, then climbing left turn to 2400 direct IPL VORTAC. Then direct BEENY via IPL R-074 and hold.		
ATIS ★	APP CON/DEP CON	TOWER ★	GND CON	CLNC DEL
269.275	128.55 292.2	119.1 360.2	121.9 254.35	340.2

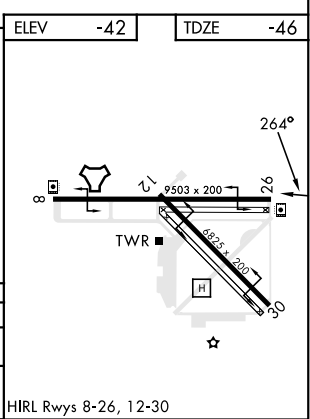


EMERG SAFE ALT 100 NM 17,000

500	2400	IPL R-074	BEENY IPL 7
-----	------	-----------	-------------



CATEGORY	A	B	C	D
S-26	380-1 426 (500-1)	380-1¼ 426 (500-1¼)	380-1½ 426 (500-1½)	520-2 562 (600-2)
CIRCLING	480-1 522 (600-1)	480-1½ 522 (600-1½)	520-2 562 (600-2)	



TACAN RWY 26

SW-3, 10 JUL 2025 to 07 AUG 2025

SW-3, 10 JUL 2025 to 07 AUG 2025