

RNAV (GPS) RWY 30

WAAS CH <b>70955</b> <b>W30A</b>	APCH CRS <b>304°</b>	Rwy Idg TDZE <b>-42</b> Arpt Elev <b>-42</b>
--	-------------------------	--

[USN]

EL CENTRO NAF (VRACIU FLD) (KNJK)

RNP APCH
*NA at night. Visibility reduction by helicopters NA.

MISSED APPROACH: Climb to 500, then climbing left turn to 2300 direct BEENY and hold.

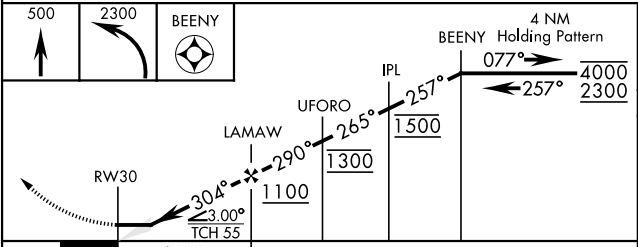
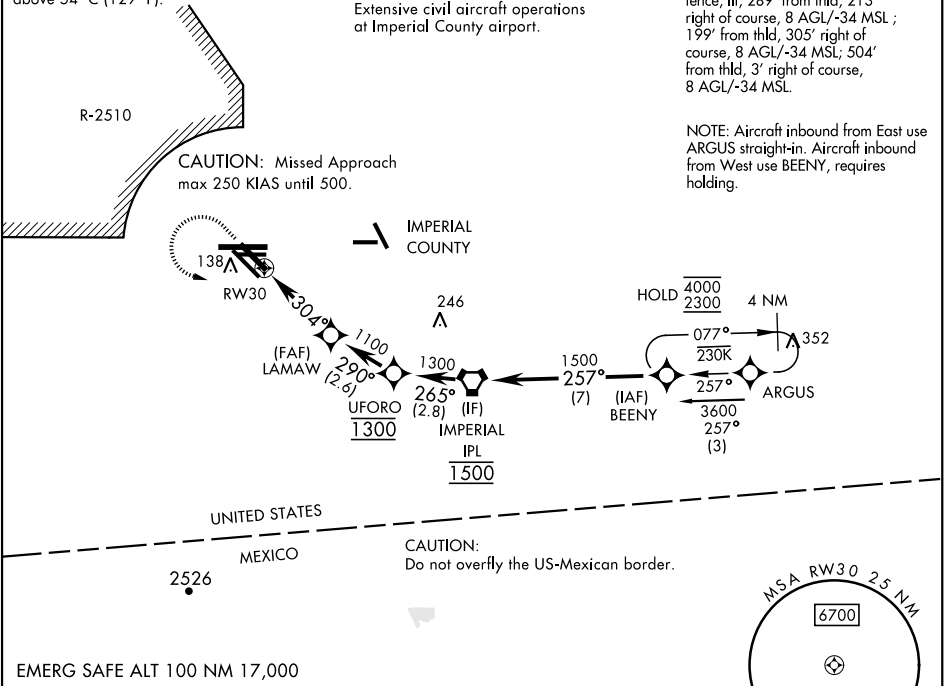
ATIS ★ <b>269.275</b>	APP CON/DEP CON <b>128.55 292.2</b>	TOWER ★ <b>119.1 360.2</b>	GND CON <b>121.9 254.35</b>	CLNC DEL <b>340.2</b>
--------------------------	--	-------------------------------	--------------------------------	--------------------------

For uncompensated Baro-VNAV system  
LNAV/VNAV NA below -14° C (7°F) or  
above 54° C (129°F).

CAUTION:  
Extensive civil aircraft operations  
at Imperial County airport.

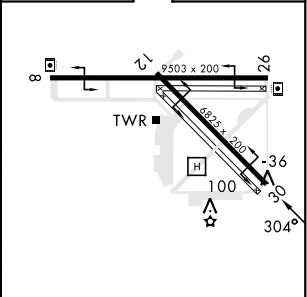
20:1 visual area penetrated by  
fence, lit, 289' from thld, 213'  
right of course, 8 AGL/-34 MSL ;  
199' from thld, 305' right of  
course, 8 AGL/-34 MSL; 504'  
from thld, 3' right of course,  
8 AGL/-34 MSL.

NOTE: Aircraft inbound from East use  
ARGUS straight-in. Aircraft inbound  
from West use BEENY, requires  
holding.



CATEGORY	A	B	C	D
LPV DA*	208-1		250	(300-1)
LNAV/VNAV DA*	231-1 273 (300-1)	242-1 284 (300-1)	250-1 292 (300-1)	261-1 303 (400-1)
LNAV MDA*	360-1 402 (500-1)	360-1½ 402 (500-1½)		520-2
CIRCLING	480-1 522 (600-1)	480-1½ 522 (600-1½)		562 (600-2)

ELEV -42	TDZE -42
----------	----------



RNAV (GPS) RWY 30

SW-3, 10 JUL 2025 to 07 AUG 2025

SW-3, 10 JUL 2025 to 07 AUG 2025