
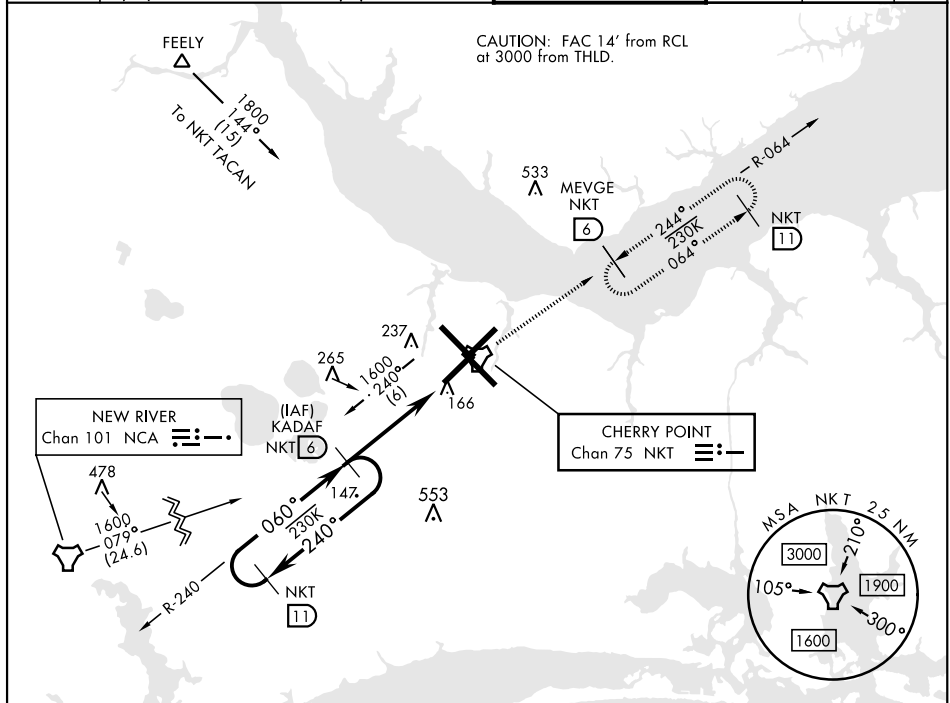


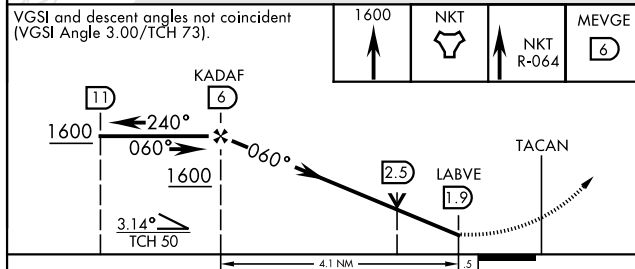
TACAN Z RWY 5R


TACAN NKT Chan 75		APCH CRS 060°		Rwy Idg 8188 TDZE 27 Arpt Elev 29		[USN] CHERRY POINT MCAS (CUNNINGHAM FLD) (KNKT)	
						MISSED APPROACH: Climb to 1600 direct NKT TACAN and fly NKT R-064 to MEVGE and hold.	
ATIS		APP CON				TOWER	
127.475	(E) 119.75	360.775	(obv 2600')			GND CON	CLNC DEL
	(E) 132.575	299.6	(at/blw 2600')		121.3 340.2	128.625	125.95
244.875	(W) 119.35	377.175	(N) 124.1	268.7		239.025	316.125
							ASR/ PAR

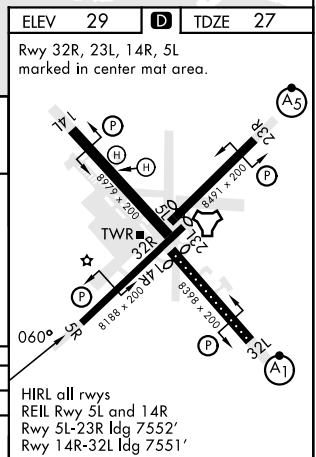


EMERG SAFE ALT 100 NM 4100

VGSI and descent angles not coincident (VGSI Angle 3.00/TCH 73).



CATEGORY	A		B		C		D	
S-5R	420-1	394	(400-1)		420-1½	394	(400-1½)	
 CIRCLING	580-1	551	(600-1)		580-1½ 551 (600-1½)		580-2 551 (600-2)	



CHERRY POINT, NORTH CAROLINA

34°54'N-76°53'W CHERRY POINT MCAS (CUNNINGHAM FLD) (KNKT)

Amdt 5 02NOV23

TACAN Z RWY 5R

SE-2, 10 JUL 2025 to 07 AUG 2025

SE-2, 10 JUL 2025 to 07 AUG 2025