

RNAV (GPS) RWY 5R

WAAS	APCH CRS	Rwy Idg	8188
Chan 71199	054°	TDZE	27
W05A		Arpt Elev	29

[USN]

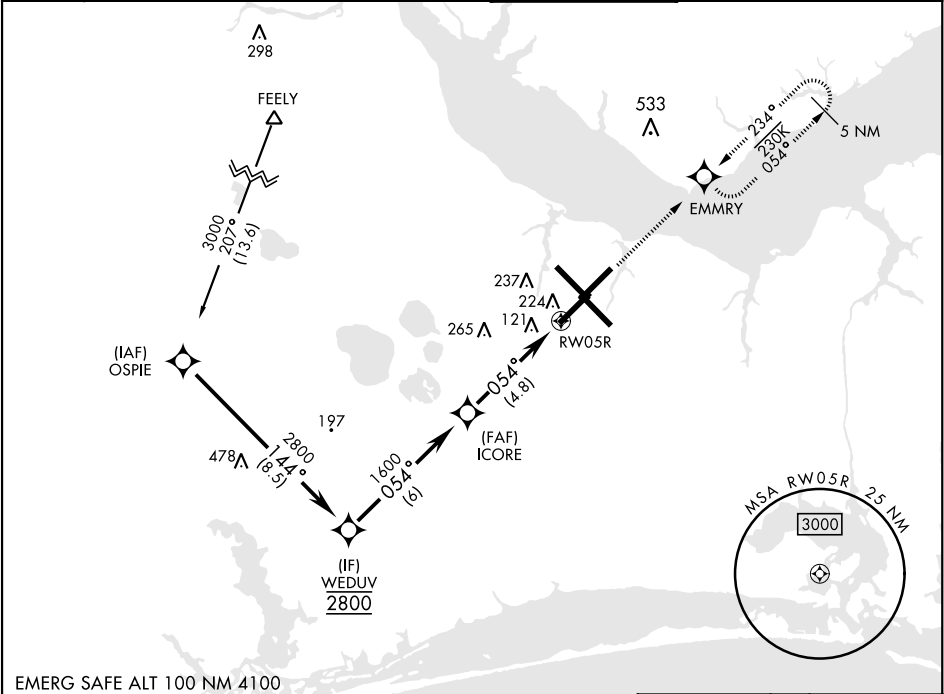
CHERRY POINT MCAS (CUNNINGHAM FLD) (KNKT)

RNP APCH

For uncompensated Baro-VNAV systems, LNAV/VNAV NA below -15°C (5°F) or above 54°C (129°F).

MISSED APPROACH: Climb to 600, then climbing left turn to 2600 direct EMMRY and hold. Continue climb in hold to 2600.

ATIS	APP CON	TOWER	GND CON	CLNC DEL	ASR/ PAR
127.475	(E) 119.75 360.775 (abv 2600')	121.3 340.2	128.625	125.95	
244.875	(E) 132.575 299.6 (at/blw 2600')		239.025	316.125	
	(W) 119.35 377.175 (N) 124.1 268.7				



OSPIE	WEDUV	ICORE	RW05R	EMMRY	ELEV 29	TDZE 27
3000	2800	1600	1.2 NM to RW05R		Rwy 32R, 23L, 14R, 5L marked in center mat area.	
GP 3.00° TCH 55			4.8 NM			
CATEGORY	A	B	C	D		
LPV DA		226-¾	200	(200-¾)		
LNAV/VNAV DA		398-1	372	(400-1)		
LNAV MDA	480-1	454 (500-1)	480-1¾	454 (500-1¾)		
CIRCLING	580-1	551 (600-1)	580-1½	551 (600-1½)		

RNAV (GPS) RWY 5R

SE-2, 10 JUL 2025 to 07 AUG 2025

SE-2, 10 JUL 2025 to 07 AUG 2025