
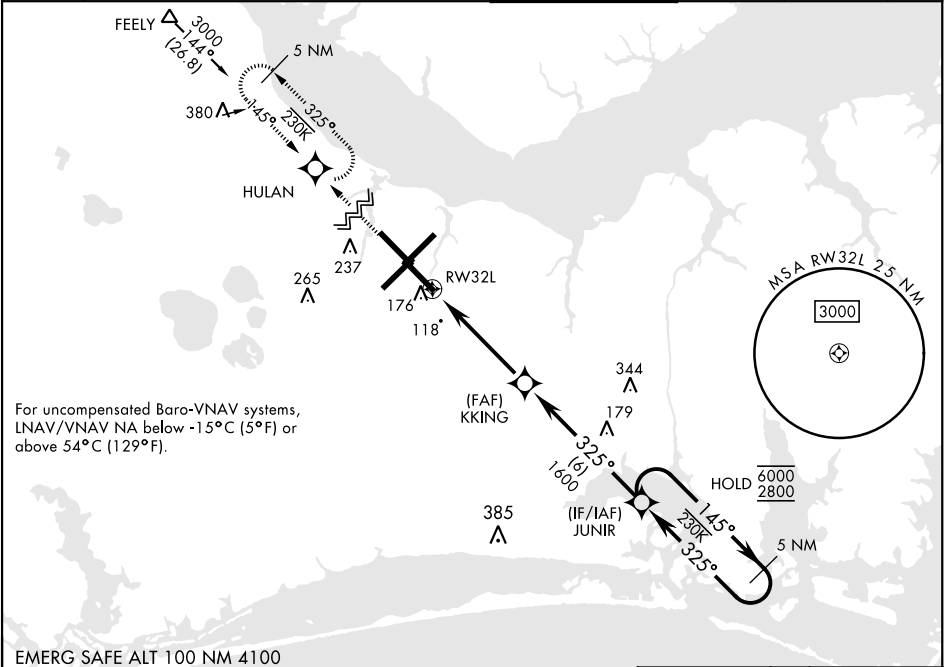


RNAV (GPS) RWY 32L

WAAS	APCH CRS	Rwy Idg	7551
Chan 54304	325°	TDZE	26
W32A		Arprt Elev	29

[USN] CHERRY POINT MCAS (CUNNINGHAM FLD) (KNKT)

RNP APCH			ALSIF-1		MISSED APPROACH: Climb to 600 then climbing right turn to 2800 direct HULAN and hold.					
▼ *When ALS inop, increase vis to ¾ mile. **When ALS inop, increase vis to 1 mile. ***When ALS inop, increase CAT AB vis to 1 mile, CAT CD vis to 1¼ miles.										
ATIS		APP CON			TOWER		GND CON	CLNC DEL	ASR/ PAR	
127.475		(E) 119.75	360.775 (abv 2600')			121.3 340.2		128.625		125.95
(E) 132.575		299.6 (at/blw 2600')								
244.875		(W) 119.35	377.175 (N) 124.1 268.7			239.025		316.125		



600

↑

2800

↗

HULAN

✦

VGSI and RNAV glidepath not coincident.
(VGSI Angle 3.00/TCH 78)

5 NM
Holding Pattern

JUNIR

← 325° 6000

145° → 2800

GP 3.04°
TCH 50

1.2 NM
to RW32L

↙

KKING

✕

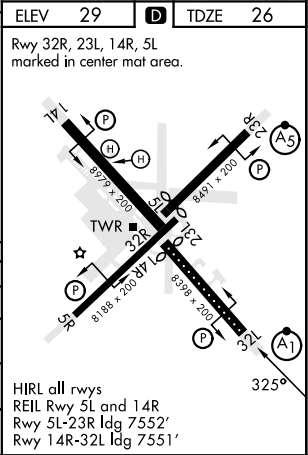
↖ 325°

↘ 1600

4.8 NM

→

CATEGORY	A	B	C	D
LPV DA*	225-½		200	(200-½)
LNAV/ ** VNAV DA	400-¾		375	(400-¾)
LNAV MDA ***	460-½	435 (500-½)	460-¾	435 (500-¾)
CIRCLING	580-1	551 (600-1)	580-1½ 551 (600-1½)	580-2 551 (600-2)



RNAV (GPS) RWY 32L

SE-2, 10 JUL 2025 to 07 AUG 2025

SE-2, 10 JUL 2025 to 07 AUG 2025