

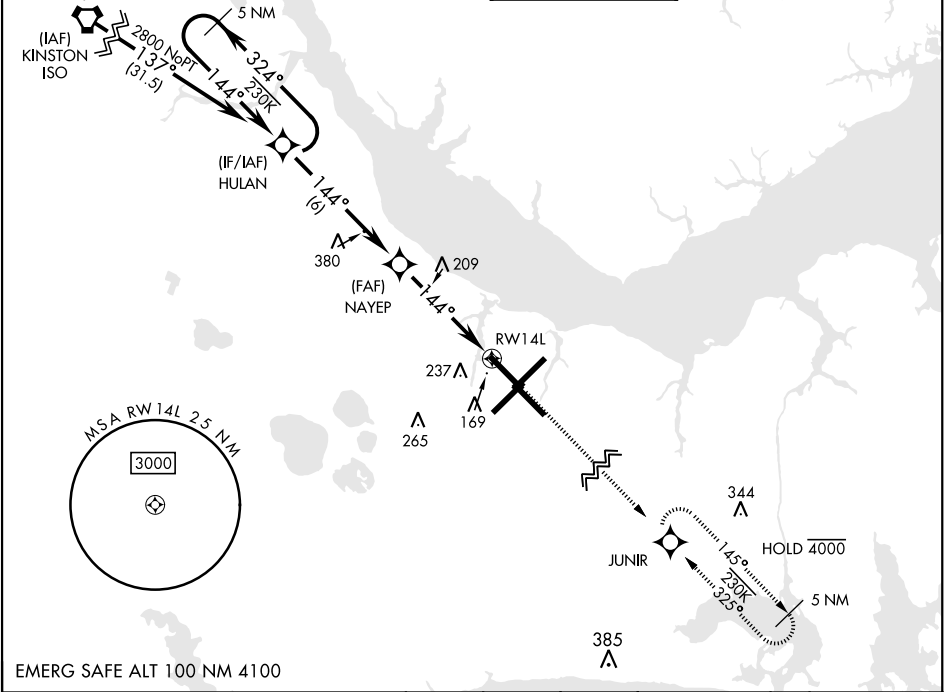
RNAV (GPS) RWY 14L

WAAS	APCH CRS	Rwy Idg	8979
Chan 41117	144°	TDZE	26
W14A		Arpt Elev	29

[USN]

CHERRY POINT MCAS (CUNNINGHAM FLD) (KNKT)

RNP APCH		MISSED APPROACH: Climb to 600 then climbing right turn to 2800 direct JUNIR and hold.		
▼ For uncompensated Baro-VNAV systems, LNAV/VNAV NA below -15°C (5°F) or above 54°C (129°F).				
ATIS	APP CON	TOWER	GND CON	CLNC DEL
127.475	119.75 (E) 360.775 (abv 2600')	121.3 340.2	128.625	125.95
244.875	132.575 (E) 299.6 (at/blw 2600')		239.025	316.125
	119.35 (W) 377.175 (N) 124.1 268.7			ASR/ PAR



EMERG SAFE ALT 100 NM 4100

VGSI and RNAV glidepath not coincident (VGSI Angle 3.00°/TCH 71').

5 NM Holding Pattern

HULAN

NAYEP

RWY 14L

GP 3.00° TCH 55

1.3 NM to RWY 14L

4.8 NM

CATEGORY	A	B	C	D
LPV DA		226-3/4	200	(200-3/4)
LNAV/ VNAV DA	301-7/8 275 (300-7/8)	312-7/8 286 (300-7/8)	320-7/8 294 (300-7/8)	331-7/8 305 (400-7/8)
LNAV MDA	500-1	474 (500-1)	500-1 3/8 551 (600-1 1/2)	474 (500-1 3/8) 551 (600-2)
CIRCLING	580-1	551 (600-1)		

ELEV 29 TDZE 26

Rwy 32R, 23L, 14R, 5L marked in center mat area.

TWR

HIRL all rwys

REIL Rwy 5L and 14R

Rwy 5L-23R Idg 7552'

Rwy 14R-32L Idg 7551'

RNAV (GPS) RWY 14L

SE-2, 10 JUL 2025 to 07 AUG 2025

SE-2, 10 JUL 2025 to 07 AUG 2025