

ILS or LOC/DME RWY 23R

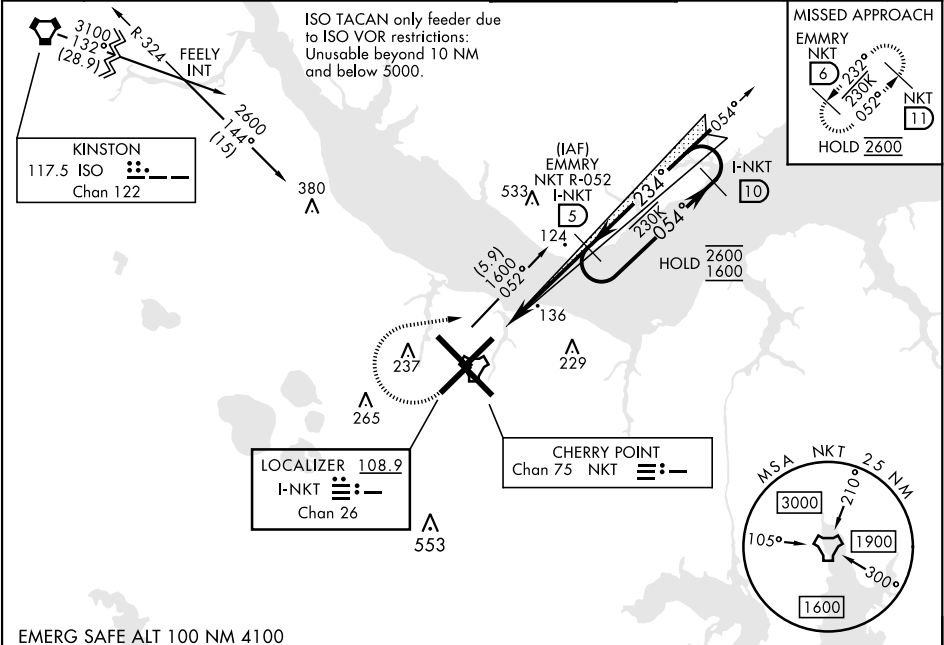
LOC/DME I-NKT	APCH CRS	Rwy Idg
108.9	234°	7552
Chan 26		23
		29

[UN]

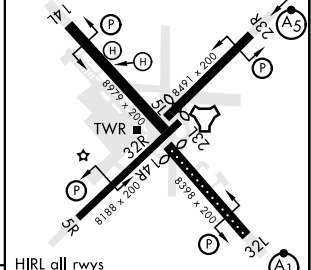
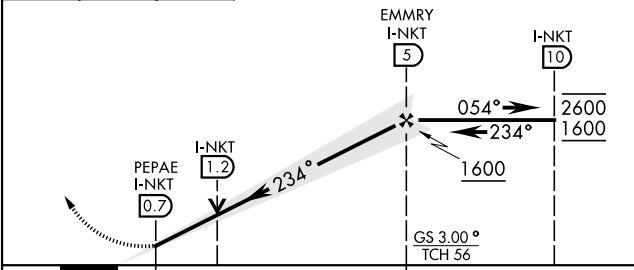
CHERRY POINT MCAS (CUNNINGHAM FLD) (KNKT)

TACAN required	MALSR	MISSED APPROACH: Climb to 500, then climbing right turn to 2600 via NKT TACAN R-052 to EMMRY and hold. Continue climb in hold to 2600.
* When ALS inop, increase vis to ¾ mile. ** When ALS inop, increase vis to 1 mile.		

ATIS	APP CON	TOWER	GND CON	CLNC DEL	ASR/ PAR
127.475	(E) 119.75 360.775 (abv 2600') (E) 132.575 299.6 (at/bw 2600') (W) 119.35 377.175 (N) 124.1 268.7	121.3 340.2	128.625 239.025	125.95 316.125	



500	2600	EMMRY NKT 6	VGSI and ILS glidepath not coincident (VGSI Angle 3.00/TCH 53).	ELEV 29	TDZE 23



CATEGORY	A	B	C	D
S-ILS 23R*	223-1/2	200	(200-1/2)	
S-LOC 23R**	400-1/2 377 (400-1/2)	400-5/8 377 (400-5/8)	580-1 1/2 551 (600-1 1/2)	580-2 551 (600-2)
CIRCLING	580-1 551 (600-1)	580-1 1/2 551 (600-1 1/2)	580-2 551 (600-2)	

HIRL all rwys					
REIL Rwy 5L and 14R					
Rwy 5L-23R Idg 7552'					
Rwy 14R-32L Idg 7551'					
FAF to MAP 4.3 NM					
Knots	60	90	120	150	180
Min:Sec	4:18	2:52	2:09	1:43	1:26

ILS or LOC/DME RWY 23R

SE-2, 10 JUL 2025 to 07 AUG 2025

SE-2, 10 JUL 2025 to 07 AUG 2025