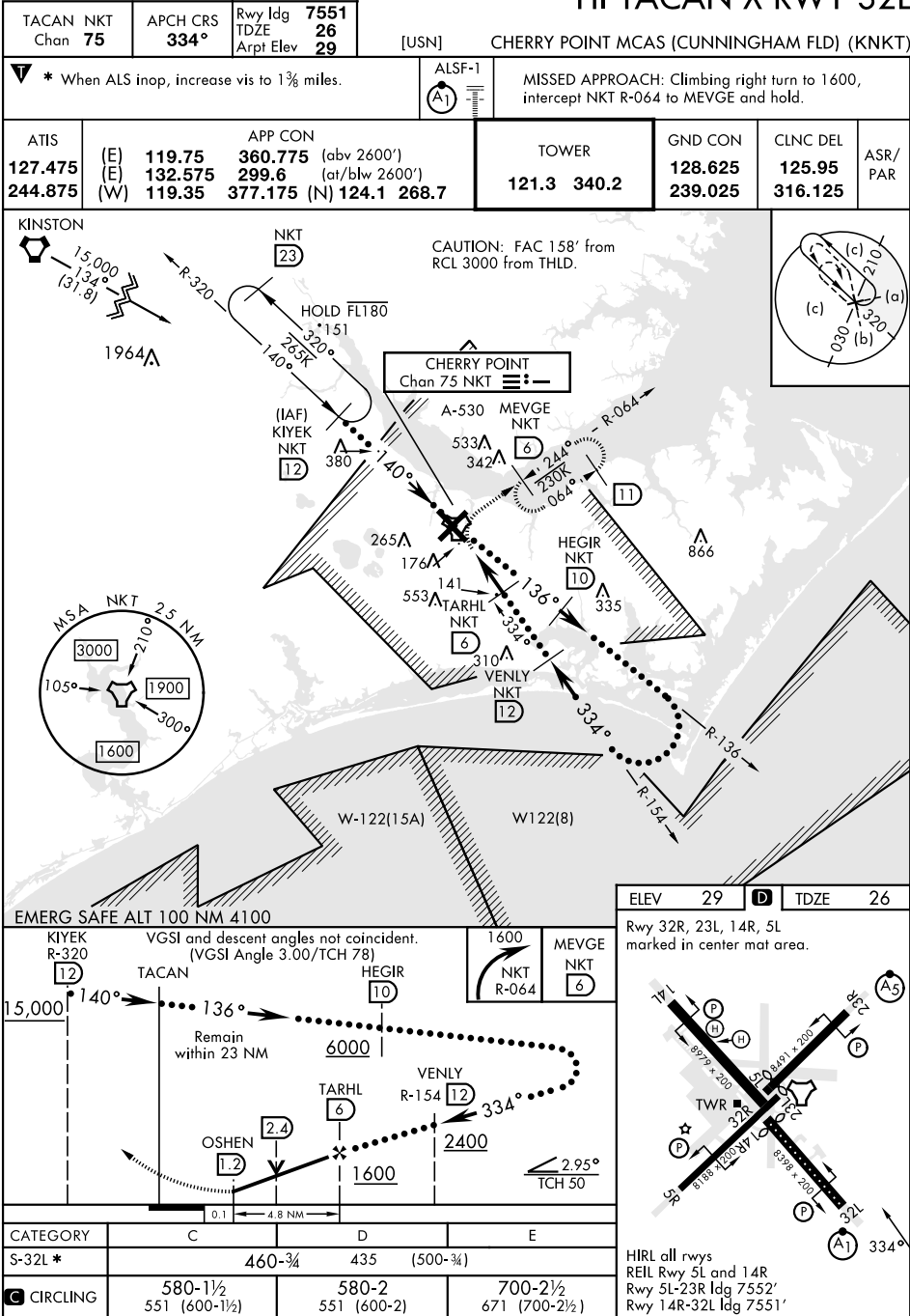


CHERRY POINT, NORTH CAROLINA

HI-TACAN X RWY 32L



CHERRY POINT, NORTH CAROLINA 34° 54' N-76° 53' W CHERRY POINT MCAS (CUNNINGHAM FLD) (KNKT)

Amtd 7 02NOV23

HI-TACAN X RWY 32L