
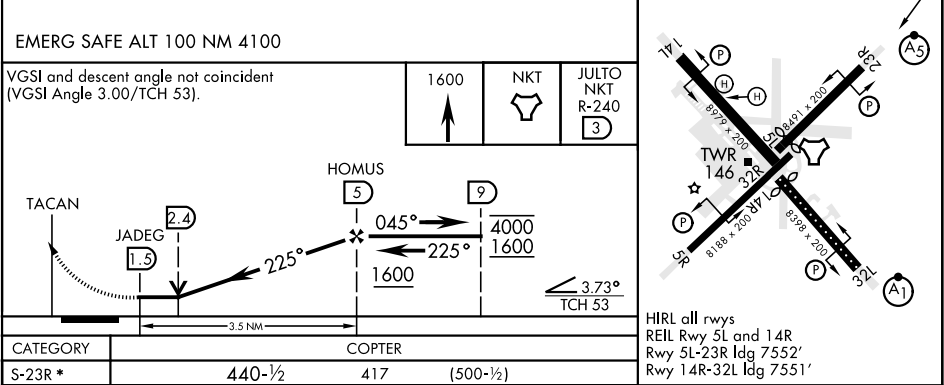
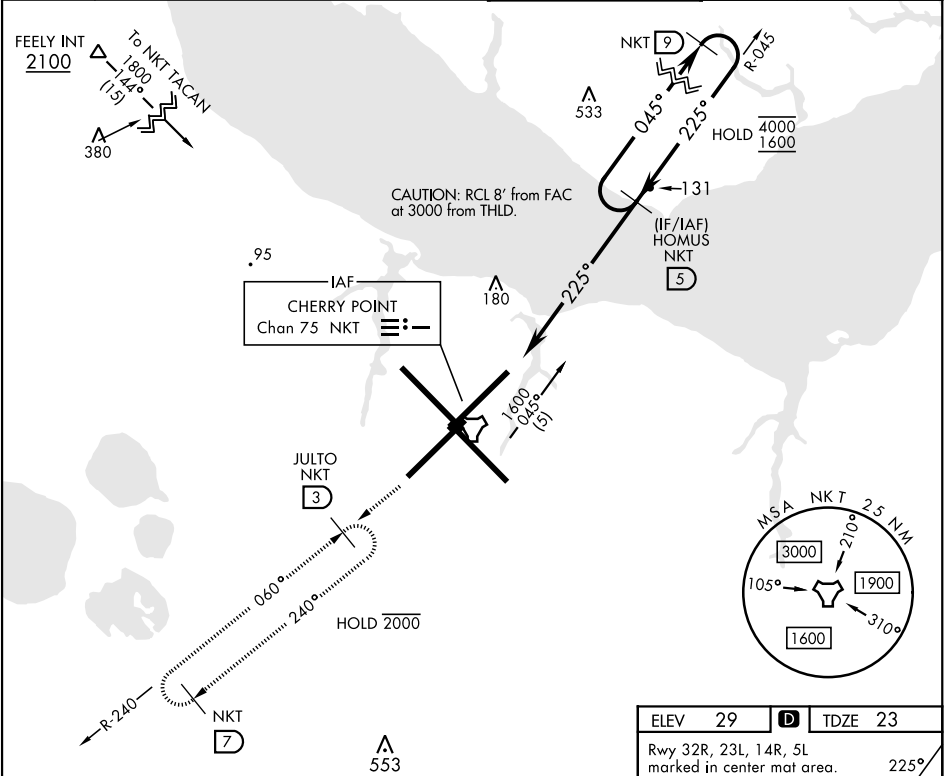


CHERRY POINT, NORTH CAROLINA

COPTER TACAN RWY 23R

TACAN NKT Chan 75	APCH CRS 225°	Rwy ldg 7552 TDZE 23 Arpt Elev 29	[USN]	CHERRY POINT MCAS (CUNNINGHAM FLD) (KNKT)	
▼ * When ALS inop, increase vis to 1 mile. Max Airspeed 90 KIAS			MALSR 	MISSED APPROACH: Climb to 1600 direct NKT TACAN and fly NKT R-240 to JULTO and hold.	
ATIS 127.475 244.875	(E) 119.75 (E) 132.575 (W) 119.35	APP CON 360.775 (abv 2600') 299.6 (at/blw 2600') 377.175 (N) 124.1 268.7	TOWER 121.3 340.2		GND CON 128.625 239.025
				CLNC DEL 125.95 316.125	ASR/ PAR



CHERRY POINT, NORTH CAROLINA 34°54'N-76°53'W CHERRY POINT MCAS (CUNNINGHAM FLD) (KNKT)

Amtd 8 02NOV23

COPTER TACAN RWY 23R

SE-2, 10 JUL 2025 to 07 AUG 2025

SE-2, 10 JUL 2025 to 07 AUG 2025