

TACAN or VOR RWY 5

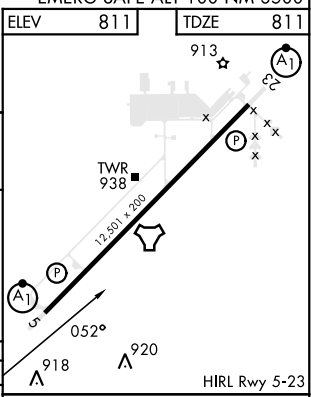
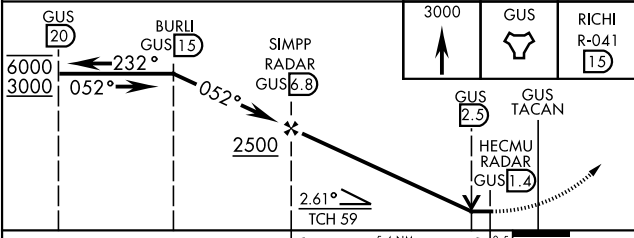
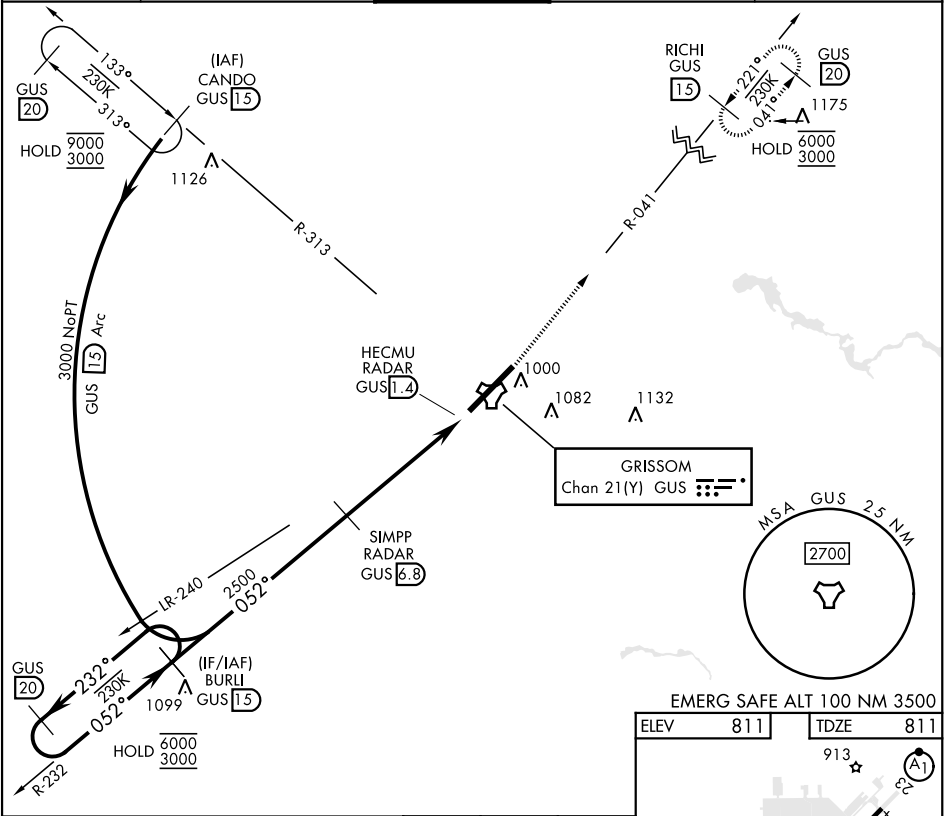
TACAN GUS Chan <b>21(Y)</b>	APCH CRS <b>052°</b>	Rwy Idg <b>12,501</b> TDZE <b>811</b> Arpt Elev <b>811</b>
--------------------------------	-------------------------	--

[USAF]

GRISSOM ARB (KGUS)

RADAR, DME required	ALSF-1 	MISSED APPROACH: Climb to 3000 on the GUS TACAN R-041 to RICHI and hold. Missed approach requires use of RNAV or ATC RADAR monitoring.
* When ALS inop, increase CAT AB RVR to 55 and vis to 1 mile; CAT CDE vis to 1 3/8 miles.		

ATIS <b>132.55 270.8</b>	APP CON <b>121.05 351.8</b> (E) <b>123.85 291.675</b> (W)	TOWER ★ <b>133.7 290.45</b>	GND CON <b>128.425 275.8</b>	CLNC DEL <b>128.425 275.8</b>
-----------------------------	---	--------------------------------	---------------------------------	----------------------------------



CATEGORY	A	B	C	D	E
S-5 *	1280/24 469 (500-1/2)		1280/50 469 (500-1)		
CIRCLING	1340-1 529 (600-1)		1400-1 589 (600-1 1/2)	1400-2 589 (600-2)	1440-2 629 (700-2 1/4)

Knots		60	90	120	150	180
Min:Sec		5:24	3:36	2:42	2:10	1:48

TACAN or VOR RWY 5

EC-2, 10 JUL 2025 to 07 AUG 2025

EC-2, 10 JUL 2025 to 07 AUG 2025