

PERU, INDIANA

TACAN or VOR RWY 23

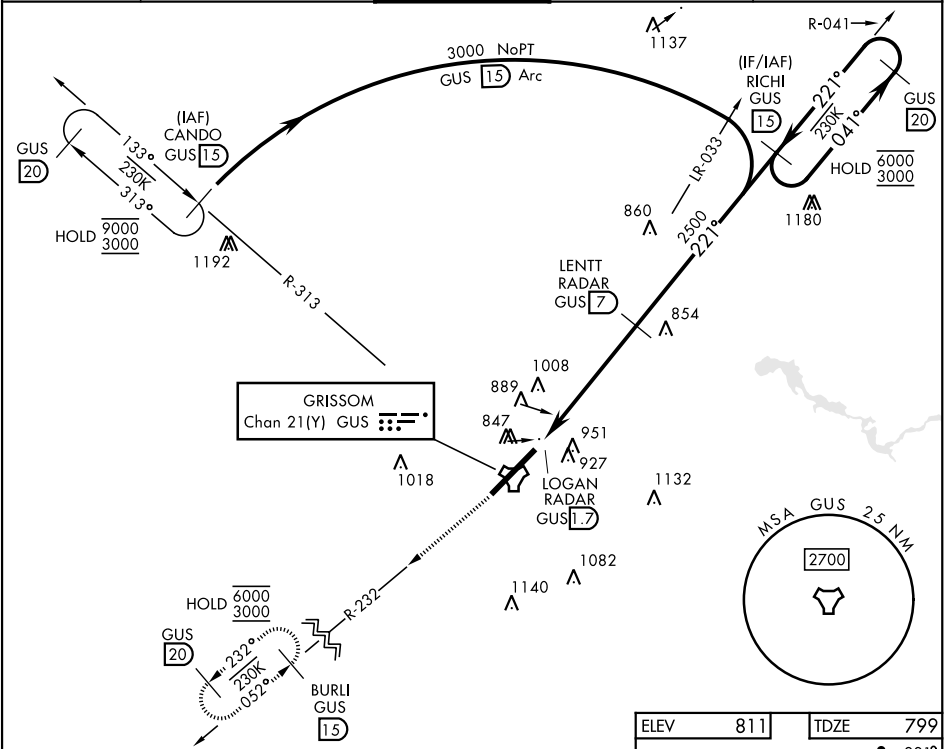
TACAN GUS Chan 21(Y)	APCH CRS 221°	Rwy Idg 12,501 TDZE 799 Arpt Elev 811
-------------------------	------------------	---

[USAF]

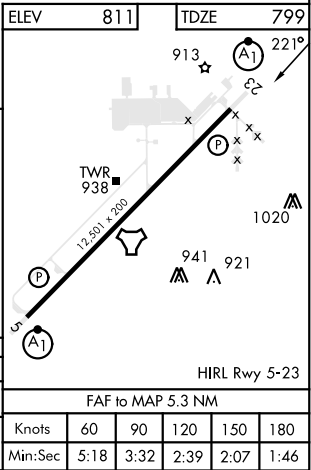
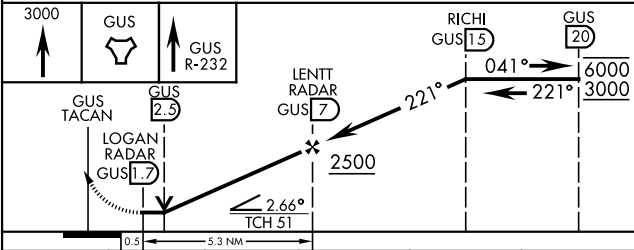
GRISSOM ARB (KGUS)

RADAR, DME required		ALSIF-1	MISSED APPROACH: Climb to 3000 on the GUS TACAN R-232 to BURLI and hold. Missed approach requires use of RNAV or ATC RADAR monitoring.
* When ALS inop, increase CAT AB RVR to 55 and vis to 1 mile; CAT CDE vis to 1½ miles.			

ATIS 132.55 270.8	APP CON 121.05 351.8 (E) 123.85 291.675 (W)	TOWER★ 133.7 290.45	GND CON 128.425 275.8	CLNC DEL 128.425 275.8
----------------------	---	------------------------	--------------------------	---------------------------



EMERG SAFE ALT 100 NM 3500



CATEGORY	A	B	C	D	E
S-23*	1260/24 461 (500-½)		1260/50 461 (500-1)		
CIRCLING	1340-1 529 (600-1)		1400-1½ 589 (600-1½)	1400-2 589 (600-2)	1440-2¼ 629 (700-2¼)

ELEV 811	TDZE 799
HIRL Rwy 5-23	
FAF to MAP 5.3 NM	
Knots	60 90 120 150 180
Min:Sec	5:18 3:32 2:39 2:07 1:46

PERU, INDIANA

40°39'N-86°09'W

GRISSOM ARB (KGUS)

Amtd 7 11AUG22

TACAN or VOR RWY 23

EC-2, 10 JUL 2025 to 07 AUG 2025

EC-2, 10 JUL 2025 to 07 AUG 2025