

PERU, INDIANA

RNAV (GPS) RWY 5

APCH CRS 046°	Rwy Idg	12,501
	TDZE	811
	Arpt Elev	811

- (USAF)

GRISSOM ARB (KGUS)

RNP APCH

ALSF-1

MISSED APPROACH: Climb to 3000 direct RILOE and hold.

* When ALS inop, increase CAT AB RVR to 55 and vis to 1 mile, CAT CDE vis to 1 3/8 miles.

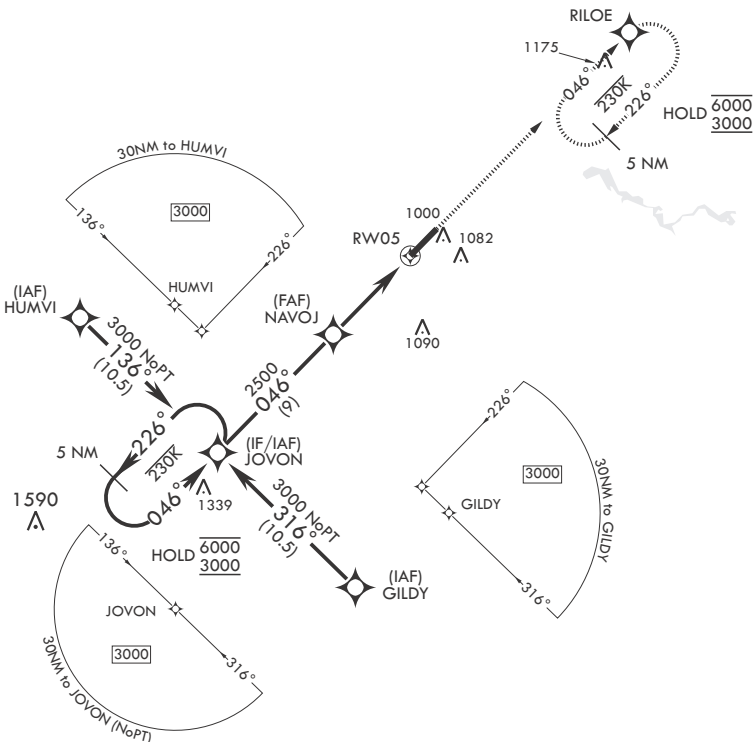
ATIS
132.55 270.8

APP CON/DEP CON
121.05 351.8 E
123.85 291.675 W

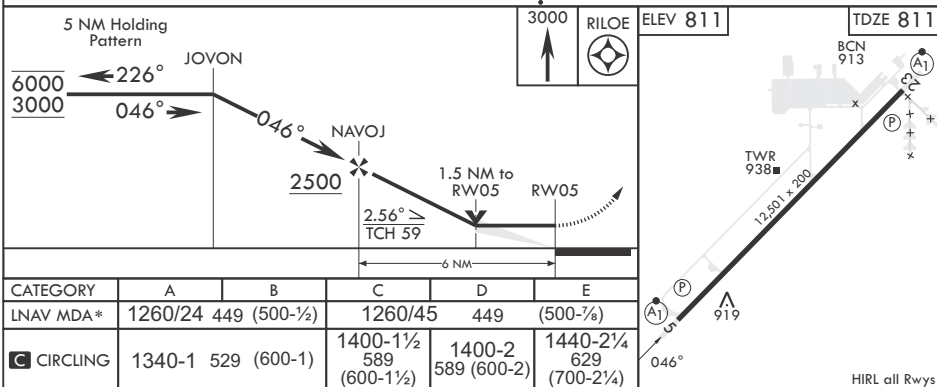
TOWER★
133.7 290.45

GND CON
128.425 275.8

CLNC DEL
128.425 275.8



EMERG SAFE ALT 100 NM 3500



PERU, INDIANA

40°39'N - 86°09'W

GRISSOM ARB (KGUS)

Amdt 7 14JUL22

RNAV (GPS) RWY 5