

PERU, INDIANA

RNAV (GPS) RWY 23

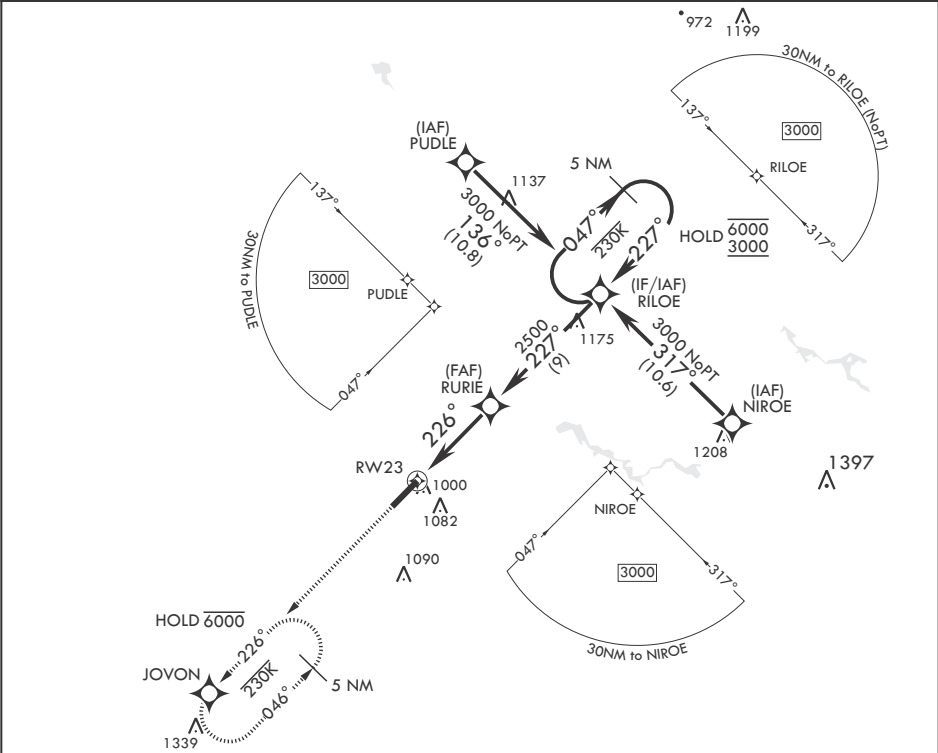
APCH CRS	Rwy Idg	12,501
226°	TDZE	799
	Arprt Elev	811

- (USAF)

GRISSOM ARB (KGUS)

RNP APCH	ALSF-1	MISSED APPROACH: Climb to 3000 direct JOVON and hold.
* When ALS inop, increase CAT AB RVR to 55 and vis to 1 mile, CAT CDE vis to 1 3/8 miles.		

ATIS 132.55 270.8	APP CON/DEP CON 121.05 351.8 E 123.85 291.675 W	TOWER★ 133.7 290.45	GND CON 128.425 275.8	CLNC DEL 128.425 275.8
----------------------	---	------------------------	--------------------------	---------------------------



EMERG SAFE ALT 100 NM 3500

 3000		 2500		 6000 3000		ELEV 811	TDZE 799
RW23		RW23		RW23		RW23	
1.5 NM to RW23		5 NM Holding Pattern		5 NM Holding Pattern		5 NM Holding Pattern	
226°		227°		047°		226°	
6 NM		6 NM		6 NM		6 NM	
CATEGORY		A		B		C	
LNAV MDA*		1260/24 461 (500-½)		1260/50 461 (500-1)		1400-1½ 589 (600-1½)	
CIRCLING		1300-1 489 (500-1)		1400-2 589 (600-2)		1440-2¼ 629 (700-2¼)	
BCN 913		TWR 938		12,501 ± 200		HIRL all Rwy's	

PERU, INDIANA

40°39'N - 86°09'W

GRISSOM ARB (KGUS)

Amdt 7 26DEC24

RNAV (GPS) RWY 23

EC-2, 10 JUL 2025 to 07 AUG 2025

EC-2, 10 JUL 2025 to 07 AUG 2025