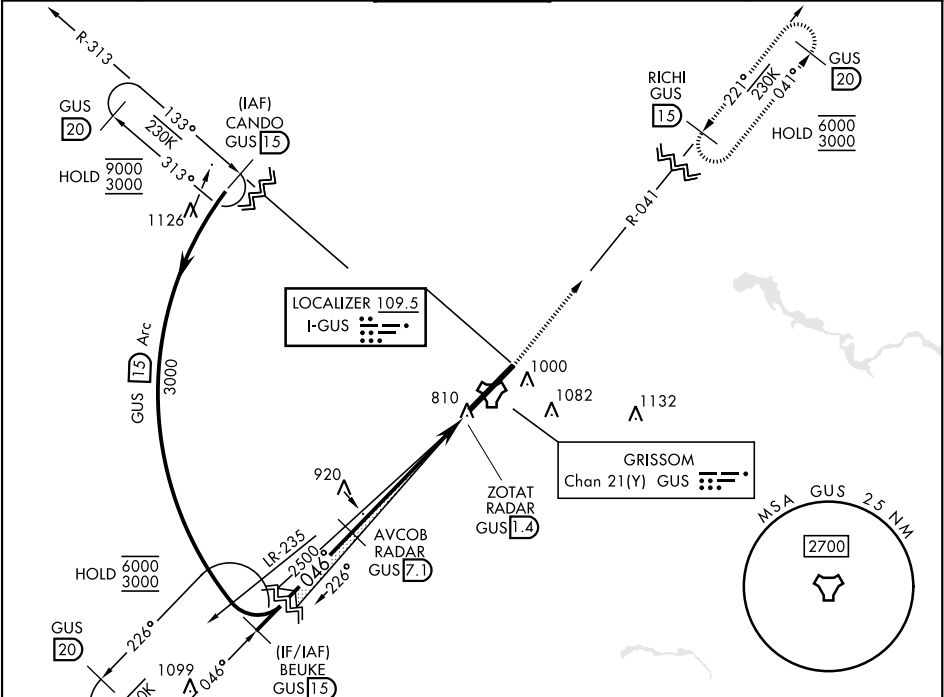


PERU, INDIANA

ILS or LOC RWY 5

LOC I-GUS 109.5	APCH CRS 046°	Rwy Idg 12,501 TDZE 811 Arpt Elev 811	[USAF]	GRISSOM ARB (KGUS)
RADAR, TACAN required			ALSIF-1 (A1)	MISSED APPROACH: Climb to 3000 on the GUS TACAN R-041 to RICHI and hold. Missed approach requires use of RNAV or ATC RADAR monitoring.
* When ALS inop, increase RVR to 40 and vis to ¾ mile. ** When ALS inop, increase CAT AB RVR to 55 and vis to 1 mile; CAT CDE vis to 1½ miles.				

ATIS 132.55 270.8	APP CON 121.05 351.8 (E) 123.85 291.675 (W)	TOWER★ 133.7 290.45	GND CON 128.425 275.8	CLNC DEL 128.425 275.8
-----------------------------	---	-------------------------------	---------------------------------	----------------------------------



EMERG SAFE ALT 100 NM 3500					
VGSI and ILS glidepath not coincident (VGSI Angle 2.50/TCH58).					
CANDO GUS 15		BEUKE GUS 15		RICHI GUS R-041	
3000		3000		3000	
GS 2.50° TCH 50		Arc		ZOTAT RADAR GUS 1.4	
3000		3000		5.7 NM	
CATEGORY		A		B	
S-ILS 5 *		1011/24		200 (200-½)	
S-LOC 5 **		1280/24		469 (500-½)	
CIRCLING		1340-1		529 (600-1)	
		589 (600-½)		589 (600-2)	
		1400-1½		1400-2	
		629 (700-2¼)		1440-2¼	

FAF to MAP 5.7 NM					
Knots	60	90	120	150	180
Min:Sec	5:42	3:48	2:51	2:17	1:54

PERU, INDIANA 40°39'N-86°09'W GRISSOM ARB (KGUS)

Amtd 9 11AUG22

ILS or LOC RWY 5

EC-2, 10 JUL 2025 to 07 AUG 2025

EC-2, 10 JUL 2025 to 07 AUG 2025