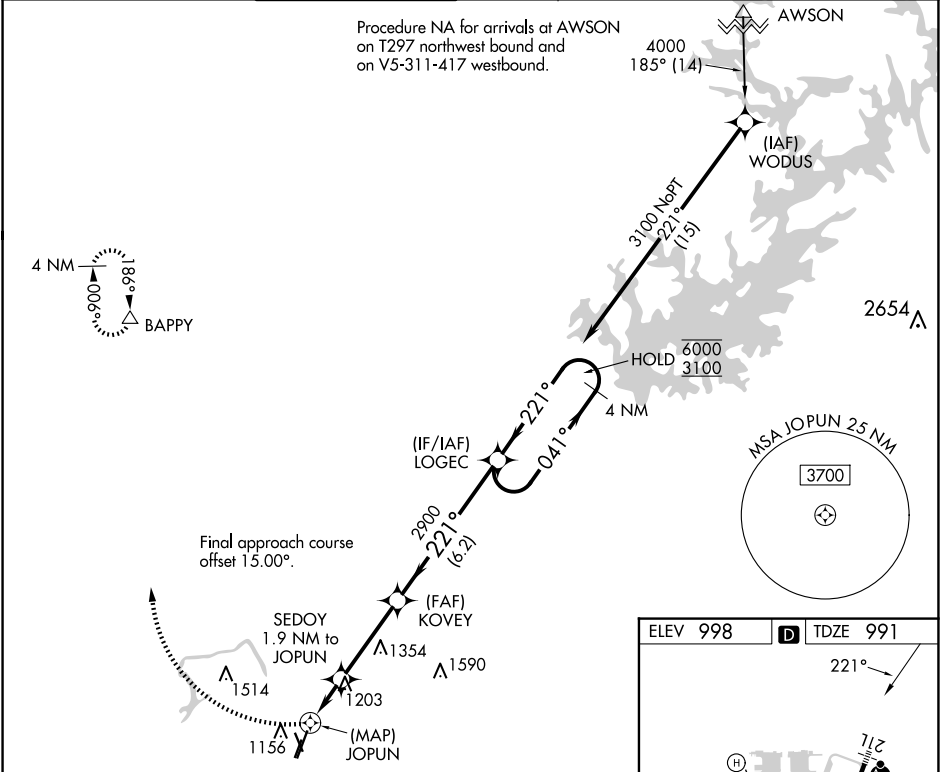


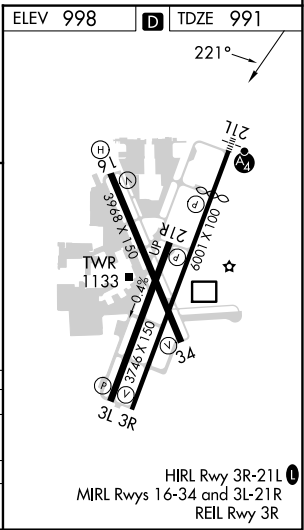
APP CRS 221°	Rwy Idg TDZE Apt Elev	4996 991 998
------------------------	-----------------------------	---

RNAV (GPS) Y RWY 21L
DEKALB-PEACHTREE (PDK)

RNP APCH.				MALSF 	MISSED APPROACH: Climbing right turn to 4000 direct BAPPY and hold.		
ATIS 128.4	ATLANTA APP CON 126,975 239,275	PEACHTREE TOWER★ 120.9 (CTAF) 281.5	GND CON 121.6		CLNC DEL 120.9 (When twr closed)	UNICOM 122.95	120.00



4000	BAPPY	SEDOTY 1.9 NM to JOPUN	KOVEY 2900	LOGEC	4 NM Holding Pattern
*LNAV only.		*0.8 NM to JOPUN	2900	221°	6000 3100
		1800*	2900	GP 3.00° TCH 56	
		A	B	C	D
CATEGORY	DA	1449/55 458 (500-1)			
LNAV/VNAV	MDA	1460/40	469 (500-3/4)	1460/60	469 (500-1 1/4)
CIRCLING		1500-1	502 (600-1)	1840-2 1/2 842 (900-2 1/2)	2060-3 1062 (1100-3)



SE-4, 10 JUL 2025 to 07 AUG 2025

SE-4, 10 JUL 2025 to 07 AUG 2025