

APP CRS  
**026°**

Rwy Idg  
**5411**

TDZE  
**996**

Apt Elev  
**998**

**RNAV (RNP) RWY 3R**

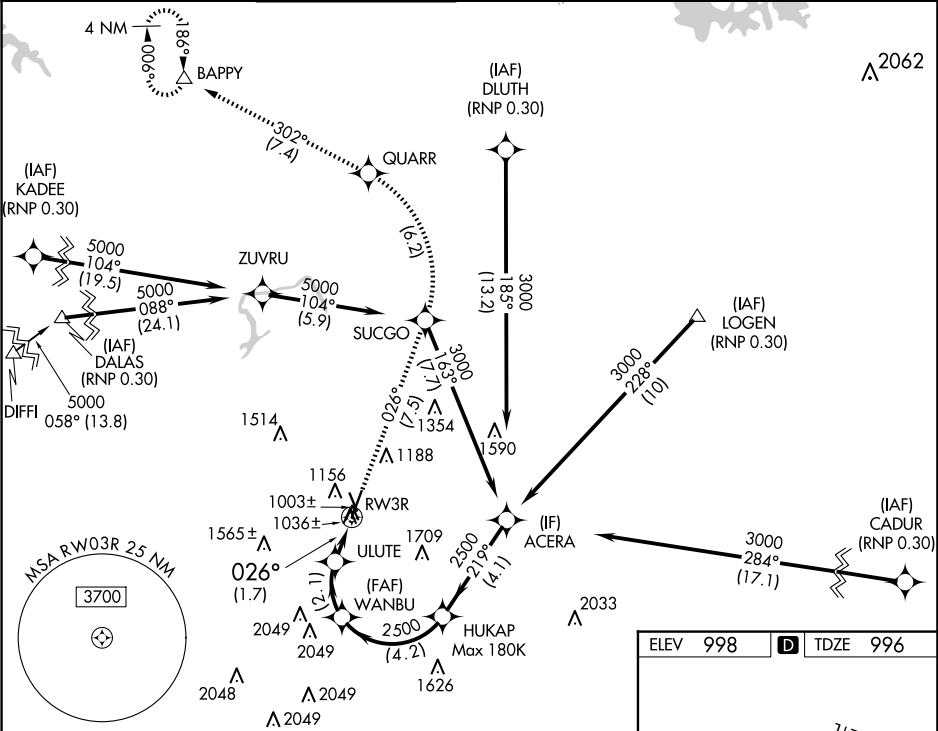
DEKALB-PEACHTREE (PDK)

**⚠**

For uncompensated Baro-VNAV systems, procedure NA below 1°C (33°F) or above 45°C (114°F).  
RF required. GPS required.

MISSED APPROACH: Climb to 4000 on track 026° to SUCGO then left turn to QUARR then on track 302° to BAPPY and hold.

ATIS <b>128.4</b>	ATLANTA APP CON <b>126.975 239.275</b>	PEACHTREE TOWER ★ <b>120.9(CTAF) 281.5</b>	GND CON <b>121.6</b>	CLNC DEL <b>125.2</b>	CLNC DEL <b>120.9</b> (When twr closed)	UNICOM <b>122.95</b>	<b>120.0</b>
----------------------	---	---	-------------------------	--------------------------	---	-------------------------	--------------



4000

↑

tr

026°

SUCGO

↶

QUARR

↶

BAPPY

△

ACERA

HUKAP Max 180K

WANBU

ULUTE

RW03R

GP 3.60°

TCH 55

4.1 NM

4.2 NM

2.1 NM

1.7 NM

CATEGORY	A	B	C	D
RNP 0.10 DA	1334-1	338 (400-1)		NA
RNP 0.30 DA	1441-1 3/8	445 (500-1 3/8)		NA

**AUTHORIZATION REQUIRED**

ELEV 998

**D**

TDZE 996

TWR 1133

3L 3R

026°

HIRL Rwy 3R-21L

MIRL Rwy 16-34 and 3L-21R

REIL Rwy 3R