




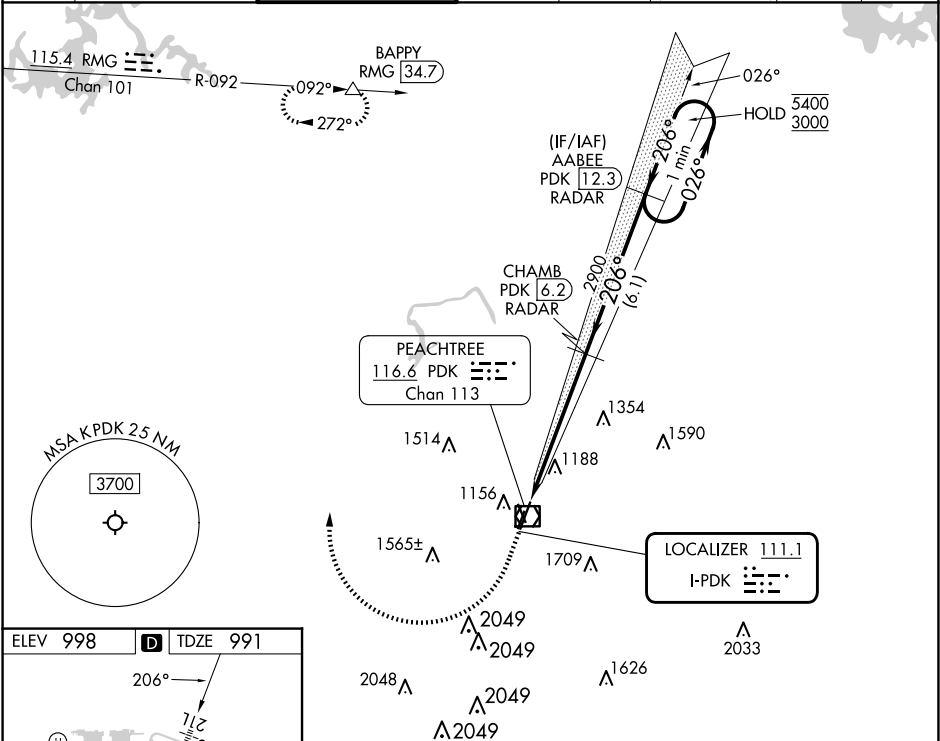
LOC I-PDK 111.1	APP CRS 206°	Rwy Idg TDZE Apt Elev	4996 991 998
---------------------------	------------------------	-----------------------------	---

ILS or LOC RWY 21L


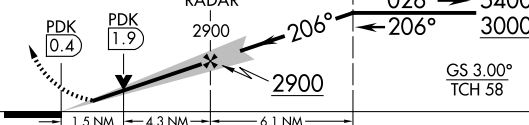
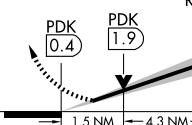

DEKALB-PEACHTREE (PDK)

RADAR required for procedure entry. DME or RADAR required.		MALSF 	MISSED APPROACH: Climb to 1600 then climbing right turn to 4000 on heading 008° and RMG VORTAC R-092 to BAPPY/RMG 34.7 DME and hold.
 	Circling Rwy 16, 34 NA at night. DME from PDK VOR/DME. Simultaneous reception of I-PDK and PDK DME required. Rwy 21L helicopter visibility reduction below RVR 4000 NA. For inop ALS, increase S-LOC 21L Cat A/B visibility to RVR 5500.		

ATIS 128.4	ATLANTA APP CON 126.975 239.275	PEACHTREE TOWER ★ 120.9 (CTAF) 281.5	GND CON 121.6	CLNC DEL 125.2	CLNC DEL 120.9 (When twr closed)	UNICOM 122.95	120.0
----------------------	---	--	-------------------------	--------------------------	---	-------------------------	--------------



ELEV 998	D	TDZE 991
HIRL Rwy 3R-21L MIRL Rws 16-34 and 3L-21R REIL Rwy 3R		
FAF to MAP 5.8 NM		
Knots	60	90 120 150 180
Min:Sec	5:48	3:52 2:54 2:19 1:56

1600 ↑	4000  hdg 008°	RMG R-092	BAPPY △	VGSI and ILS glidepath not coincident (VGSI Angle 3.00/TCH 55).	AABEE PDK 12.3 RADAR	One Minute Holding Pattern
Glide slope unusable for coupled approach below 1900.				CHAMB PDK 6.2 RADAR		
						
<div>1.5 NM4.3 NM6.1 NM</div>						
CATEGORY	A	B	C	D		
S-ILS 21L	1330/40 339 (400-¾)					
S-LOC 21L	1520/40 529 (600-¾)		1520-1¼ 529 (600-1¼)			
 CIRCLING	1520-1 522 (600-1)		1840-2½ 842 (900-2½)		2060-3 1062 (1100-3)	

SE-4, 10 JUL 2025 to 07 AUG 2025

SE-4, 10 JUL 2025 to 07 AUG 2025