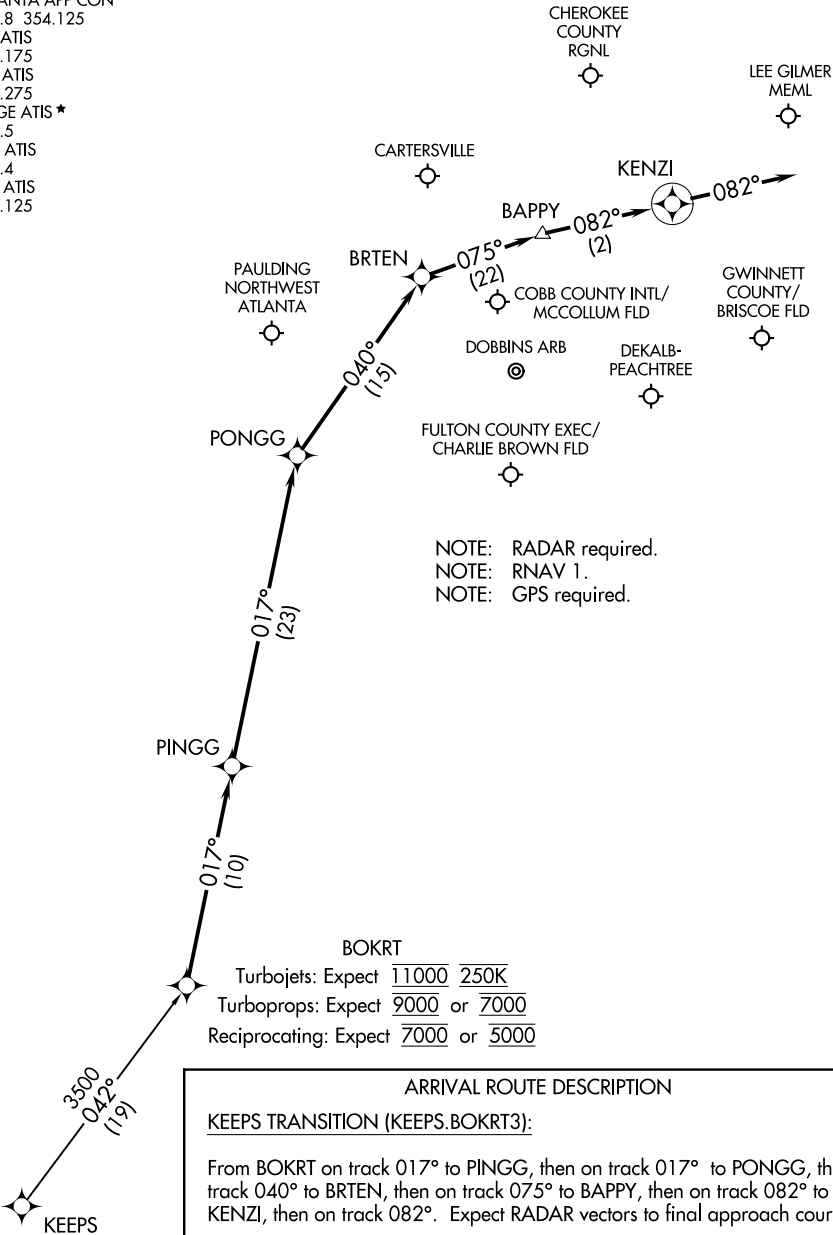


ATLANTA APP CON  
119.8 354.125  
FTY ATIS  
120.175  
LZU ATIS  
132.275  
KMGE ATIS ★  
269.5  
PDK ATIS  
128.4  
RYY ATIS  
128.125



BOKRT  
Turbojets: Expect 11000 250K  
Turboprops: Expect 9000 or 7000  
Reciprocating: Expect 7000 or 5000

ARRIVAL ROUTE DESCRIPTION

KEEPS TRANSITION (KEEPS.BOKRT3):

From BOKRT on track 017° to PINGG, then on track 017° to PONGG, then on track 040° to BRTEN, then on track 075° to BAPPY, then on track 082° to KENZI, then on track 082°. Expect RADAR vectors to final approach course.

LOST COMMUNICATIONS: Cross BOKRT at or below 11000, cross PONGG at or below 7000, cross KENZI at 5000; after KENZI proceed direct to the IAF for desired approach to filed airport.

NOTE: Chart not to scale.