

WAAS CH 78144	APP CRS 053°	Rwy Idg TDZE 716	7543
W05A		Apt Elev 716	

RNAV (GPS) RWY 5

WILLOW RUN (YIP)

RNP APCH - GPS.

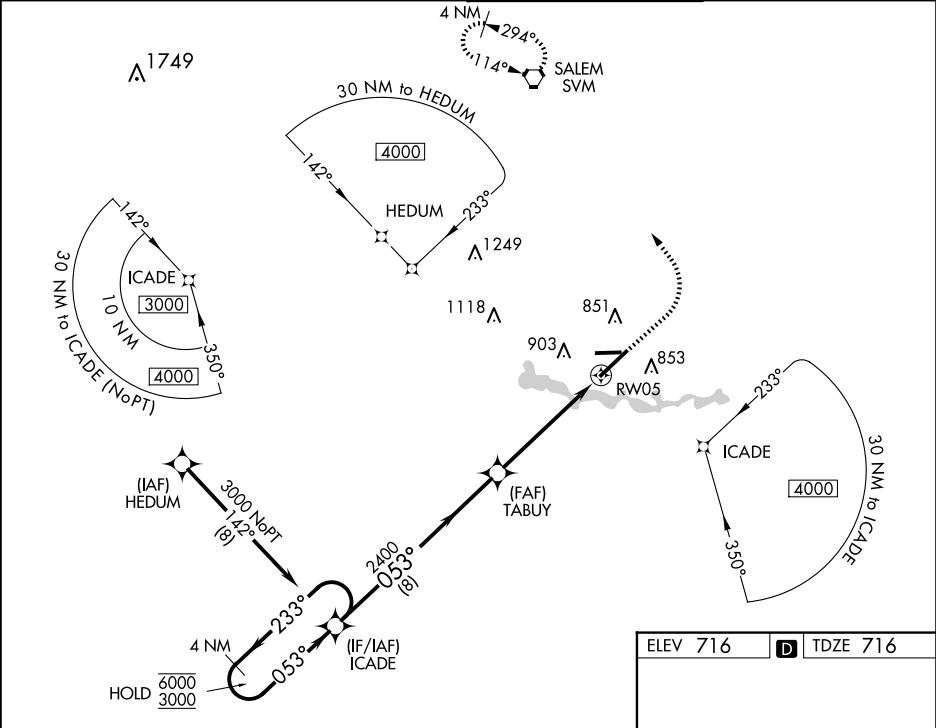
▼

For uncompensated Baro-VNAV systems, LNAV/VNAV NA below -19°C or above 54°C. For inop ALS, increase LNAV/VNAV all Cats visibility to RVR 6000, LNAV Cats C/D visibility to 1 3/8 SM.

MALSR

MISSED APPROACH: Climb to 1200 then climbing left turn to 3000 direct SVM VORTAC and hold.

ATIS 127.425	DETROIT APP CON 118.95 284.0	WILLOW RUN TOWER 125.275 256.9	GND CON 119.975
------------------------	--	--	---------------------------



ELEV 716 TDZE 716

The inset chart shows the final approach segment to RWY 5, including the TWR 804 and the final descent path. It details the 1.2 NM distance to RW05 and the 30 NM holding pattern at RW05.

CATEGORY	A	B	C	D
LPV DA	916/18 200 (200-1/2)			
LNAV/VNAV DA	1121/40 405 (500-3/4)			
LNAV MDA	1200/24 484 (500-1/2)	1200/50 484 (500-1)		
CIRCLING	1220-1 504 (600-1)	1220-1 1/2 504 (600-1 1/2)	1400-2 1/4 684 (700-2 1/4)	

TDZ/CL Rwy 5
HIRL Rwy 5-23
MIRL Rwy 9-27