

WAAS
CH **65744**
W23A

APP CRS
233°

Rwy Idg **7543**
TDZE **710**
Apt Elev **716**

RNAV (GPS) RWY 23

WILLOW RUN (YIP)

RNP APCH - GPS.

▼

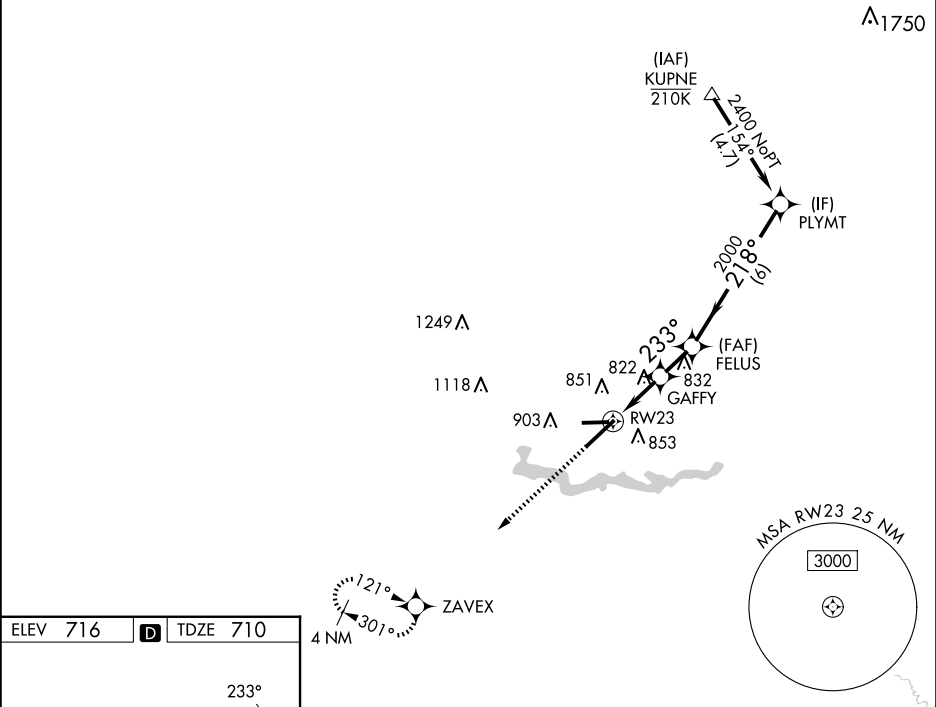
▲

For uncompensated Baro-VNAV systems, procedure NA below -19°C or above 54°C. For inop ALS, increase LNAV/VNAV all Cats visibility to ¾ SM, LNAV Cats C/D visibility to 1 SM.

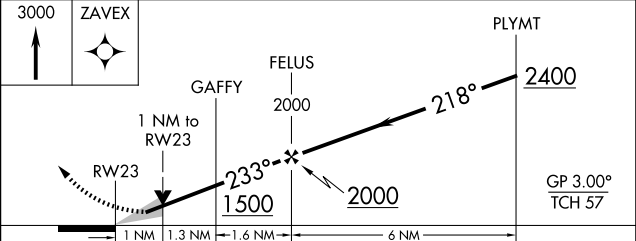
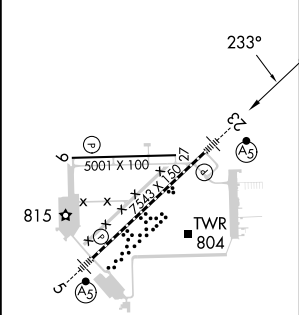
MALSR

MISSED APPROACH:
Climb to 3000 direct
ZAVEX and hold,
continue climb-in-hold to 3000.

ATIS 127.425	DETROIT APP CON 118.95 284.0	WILLOW RUN TOWER 125.275 256.9	GND CON 119.975
-----------------	---------------------------------	-----------------------------------	--------------------



ELEV 716	D	TDZE 710
----------	----------	----------



CATEGORY	A	B	C	D
LPV DA	910-1/2		200 (200-1/2)	
LNAV/VNAV DA	982-1/2		272 (300-1/2)	
LNAV MDA	1080-1/2	370 (400-1/2)	1080-5/8	370 (400-5/8)
C CIRCLING	1220-1	504 (600-1)	1220-1 1/2 504 (600-1 1/2)	1400-2 1/4 684 (700-2 1/4)