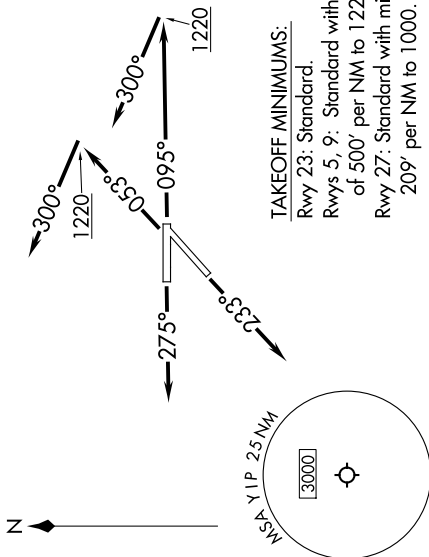


TOP ALTITUDE:  
ASSIGNED BY ATC

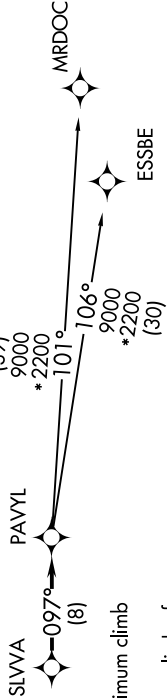
RNAV 1 - DME/DME/IRU or GPS.  
RADAR required.



TAKEOFF MINIMUMS:  
Rwy 23: Standard.  
Rwys 5, 9: Standard with minimum climb  
of 500' per NM to 1220.  
Rwy 27: Standard with minimum climb of  
209' per NM to 1000.

NOTE: Jet departures at /above 10000,  
maintain 280K until advised by ATC.

ATIS  
127.425  
GND CON  
119.975  
WILLOW RUN TOWER  
125.275 256.9  
DETROIT DEP CON  
118.95 284.0



NOTE: Chart not to scale.

DEPARTURE ROUTE DESCRIPTION

TAKEOFF RUNWAY 5: Climb on heading 053° to 1220, then on heading 300° or as assigned by ATC, for RADAR vectors to SLVA, thence....  
TAKEOFF RUNWAY 9: Climb on heading 095° to 1220, then on heading 300° or as assigned by ATC, for RADAR vectors to SLVA, thence....  
TAKEOFF RUNWAY 23: Climb on heading 233° or as assigned by ATC, for RADAR vectors to SLVA, thence....  
TAKEOFF RUNWAY 27: Climb on heading 275° or as assigned by ATC, for RADAR vectors to SLVA, thence....  
....on track 097° to PAVYL, then on (transition). Maintain 17000 or as assigned by ATC, expect filed altitude 10 minutes after departure.  
ESSBE TRANSITION (PAVYL3.ESSBE):  
MRDOC TRANSITION (PAVYL3.MRDOC):