

ATIS 127.425  
GND CON  
119.975  
WILLOW RUN  
125.275 256.

## TAKEOFF MINIMUMS

Rwys 5, 9, 23: Standard.

Rwy 27: 300-1½ or standard with a minimum climb of 209'

per NM to 1000, or alternatively, with standard takeoff minimums and a normal 200' per NM climb gradient, takeoff must occur no later than 1300' prior to departure end of runway.

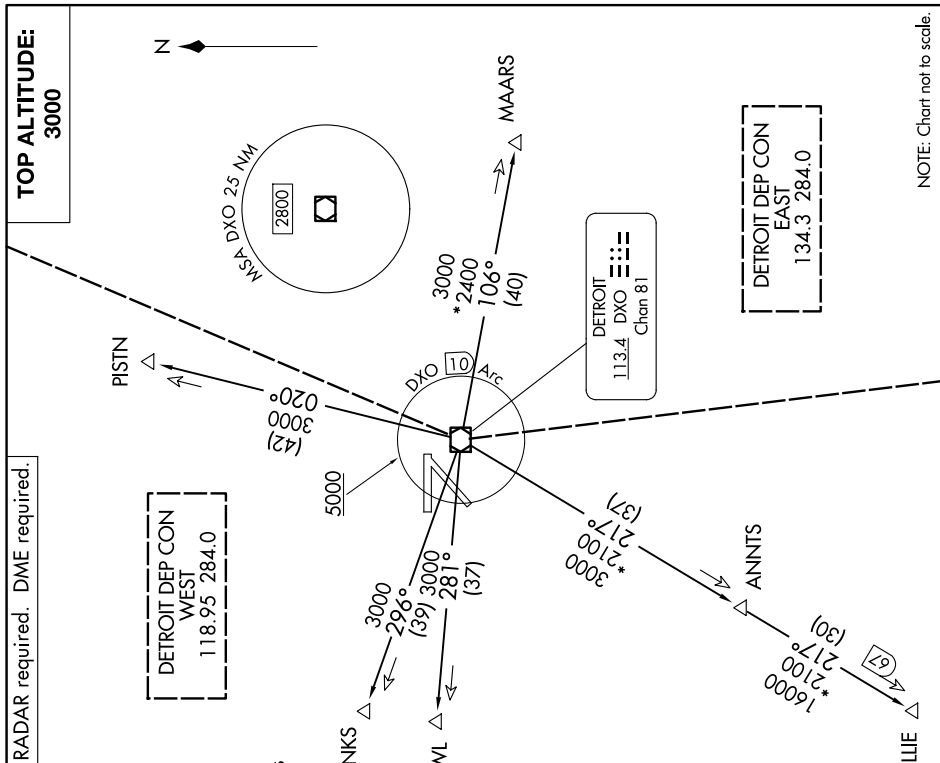
NOTE: For use by non-RNAV equipped aircraft only.

**NOTE:** When using this departure, file the appropriate depicted departure fix and route. Aircraft over HARWL must file FL220 and below. Aircraft land Cleveland (CLE) must file MAARS transition.

Turboprop departures at/above 10000, maintain 280K until advised by ATC. If unable, advise ATC prior to departure.

**SPECIAL INSTRUCTIONS:**

For appropriate departure control frequency, see graphic. Use frequency depicted within the sector where first manavaid/fix for your route is located (sectors indicated by dashed lines; frequencies in dashed box within).



RADAR required. DME required.

**TOP ALTITUDE:**  
**3000**

DETROIT  
113.4 DXO  
Chan 81

DETROIT DEP CON  
EAST  
134.3 284.0

DETROIT DEP CON  
WEST  
118.95 284.0

PISTN



▶

HARWI  $\Delta$ 

3000  
100  
%

§

11F

Z

MSA DXO 25 NM

5000



3000  
100  
%

DETROIT DEP CON  
EAST  
134.3 284.0

11F