

YAKIMA, WASHINGTON

AL-465 (FAA)

25107

VORTAC YKM <u>116.0</u> Chan 107	APP CRS 251°	Rwy Idg TDZE Apt Elev	N/A N/A 1099
--	------------------------	-----------------------------	---

VOR-A

YAKIMA AIR TRML/MCALLISTER FLD (YKM)

T DME required.
A Circling not authorized south of Rwy 9-27.
When local altimeter setting not received, procedure NA.

MISSED APPROACH: Climb to 2600 via YKM VORTAC R-251 then climbing right turn to 4600 via YKM VORTAC R-277 to YKM VORTAC and hold, continue climb-in-hold to 4600.

ATIS 125.25	SPOKANE APP CON★ 123.8 263.15	YAKIMA TOWER★ 133.25 (CTAF) 0 257.8	GND CON 121.9	CLNC DEL 121.9	UNICOM 122.95
-----------------------	---	---	-------------------------	--------------------------	-------------------------

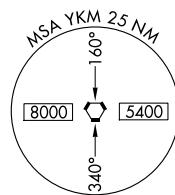
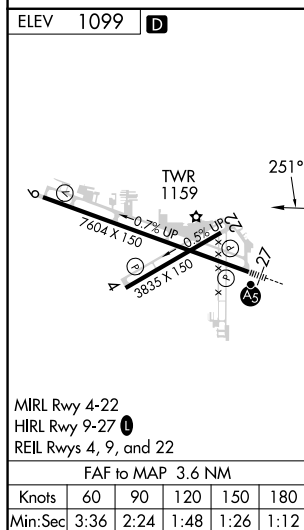
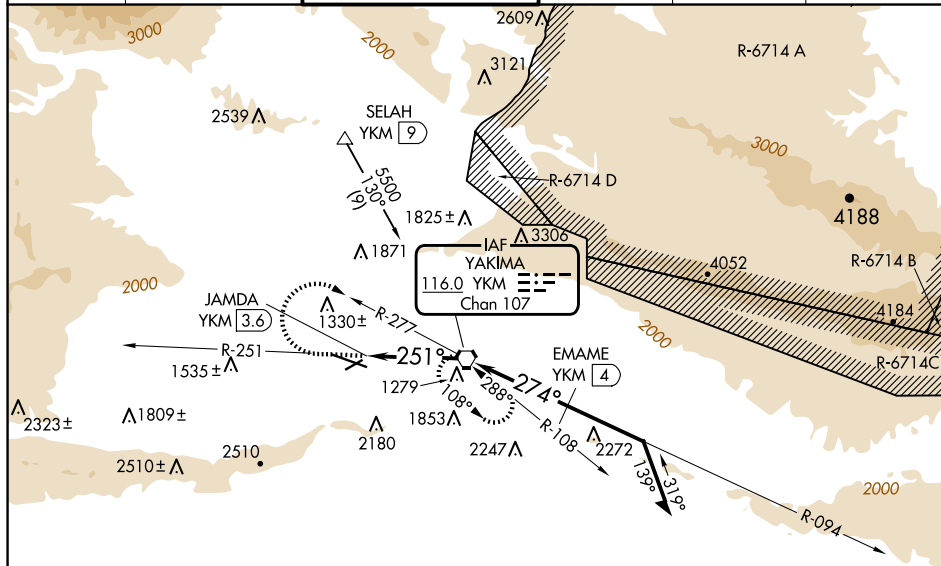


Diagram illustrating the Circling Approach to Runway 27L, showing altitudes, distances, and headings.

Altitudes: 2600, 4600, YKM, 10000, 094°, 274°, 4500, 2800, 3300, 251°.

Distances: 3.6 NM, 4 NM.

Headings: 094°, 274°, 251°.

Waypoints/References: YKM R-277, YKM VORTAC, JAMDA YKM 3.6, EMAME YKM 4, 3300.

Instructions: Remain within 10 NM.

CATEGORY	A	B	C	D
C CIRCLING	1840-1 741 (800-1)	1840-1½ 741 (800-1½)	1940-2½ 841 (900-2½)	2280-3 1181 (1200-3)

YAKIMA, WASHINGTON

Amdt 7A 18JUN20

YAKIMA AIR TRML/MCALLISTER FLD (YKM)

46°34'N-120°33'W

VOR-A

NW-1, 10 JUL 2025 to 07 AUG 2025