

WAAS CH <b>90512</b> <b>W27A</b>	APP CRS <b>274°</b>	Rwy Idg TDZE Apt Elev	<b>7604</b> <b>1068</b> <b>1099</b>
--	------------------------	-----------------------------	---

RNAV (GPS) X RWY 27  
YAKIMA AIR TRML/MCALLISTER FLD (YKM)

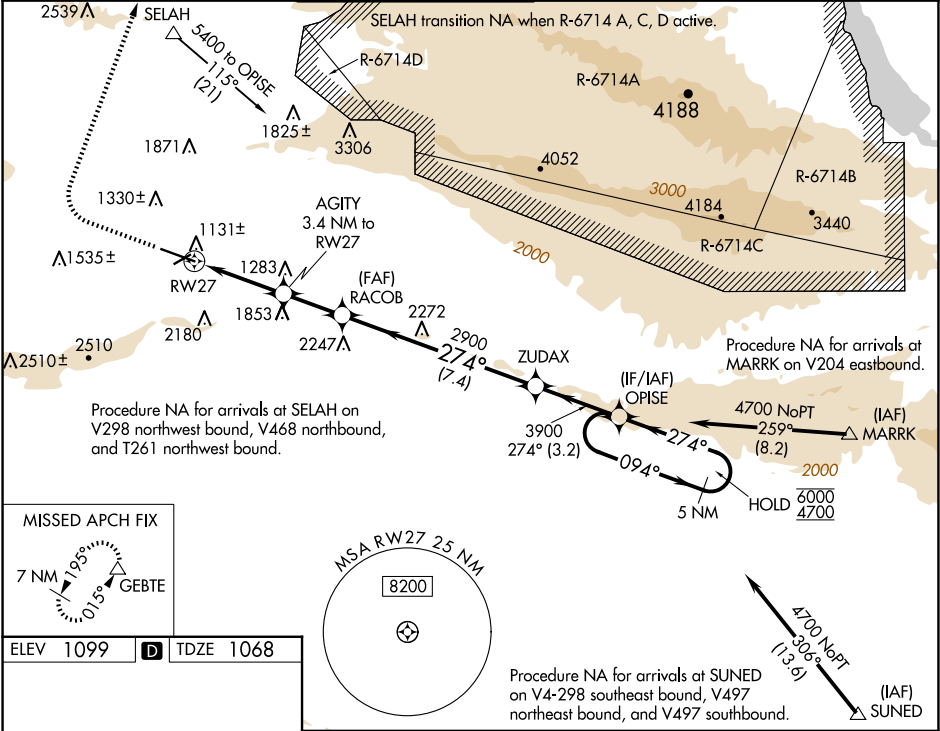
RNP APCH.

▼ Circling NA south of Rws 9 and 27.  
▲ For inop ALS, increase LPV all Cats visibility to 1¾ SM.  
\*RVR 1800 authorized with use of FD or AP or HUD to DA.

MALSR  
A5

MISSED APPROACH: Climb to 2100 then climbing right turn to 7000 direct GEBTE and hold. Continue climb-in-hold to 7000. \*Missed approach requires minimum climb of 300 feet per NM to 3700. #Missed approach requires minimum climb of 300 feet per NM to 4900.

ATIS <b>125.25</b>	SPOKANE APP CON* <b>123.8 263.15</b>	YAKIMA TOWER* <b>133.25 (CTAF) 257.8</b>	GND CON <b>121.9</b>	CLNC DEL <b>121.9</b>	UNICOM <b>122.95</b>
-----------------------	---	---	-------------------------	--------------------------	-------------------------



ELEV 1099	D	TDZE 1068
-----------	---	-----------

MIRL Rwy 4-22  
HIRL Rwy 9-27  
REIL Rws 4, 9, and 22

2100 7000 GEBTE

\*LNAV only

\*0.9 NM to RW27

RACOB 2900

AGITY 3.4 NM to RW27

ZUDAX 2900

OPISE 5 NM Holding Pattern

094° 6000

274° 4700

GP 3.00° TCH 57

CATEGORY	A	B	C	D
LPV DA*	1268/24	200 (200-½)		
LPV DA	1668-1¼	600 (600-1¼)		
LNAV MDA#	1400/24	332 (400-½)	1400/26	332 (400-½)
LNAV MDA	1720/24	652 (700-½)	1720-1¾	652 (700-1¾)
CIRCLING	1720-1	621 (700-1)	1880-2¼ 781 (800-2¼)	2280-3 1181 (1200-3)

NW-1, 10 JUL 2025 to 07 AUG 2025

NW-1, 10 JUL 2025 to 07 AUG 2025