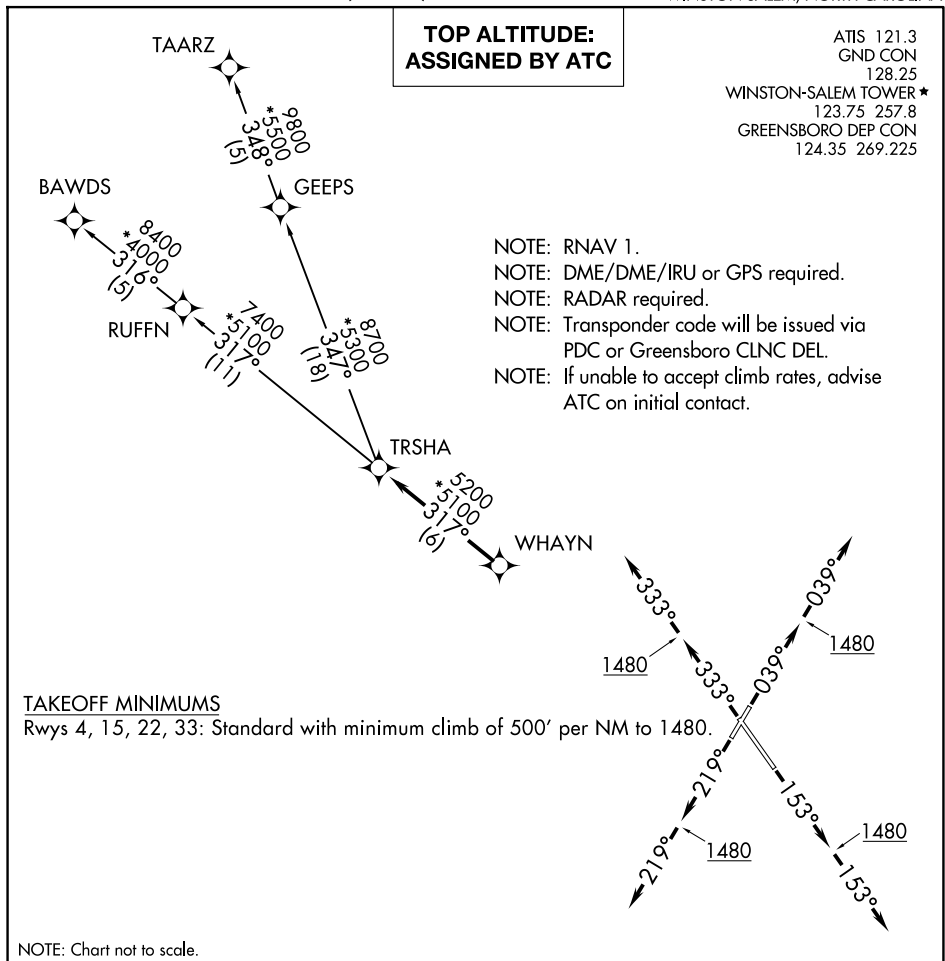


## TRSHA ONE DEPARTURE (RNAV)

WINSTON SALEM, NORTH CAROLINA



## DEPARTURE ROUTE DESCRIPTION

- TAKEOFF RUNWAY 4: Climb heading 039° to 1480, then on heading 039°. Thence. . .  
 TAKEOFF RUNWAY 15: Climb heading 153° to 1480, then on heading 153°. Thence. . .  
 TAKEOFF RUNWAY 22: Climb heading 219° to 1480, then on heading 219°. Thence. . .  
 TAKEOFF RUNWAY 33: Climb heading 333° to 1480, then on heading 333°. Thence. . .

...expect RADAR vectors to WHAYN, then on track 317° to TRSHA, then on assigned transition. Maintain altitude assigned by ATC. Expect clearance to filed altitude within ten (10) minutes after departure.

BAWDS TRANSITION (TRSHA1.BAWDS)  
TAARZ TRANSITION (TRSHA1.TAARZ)