

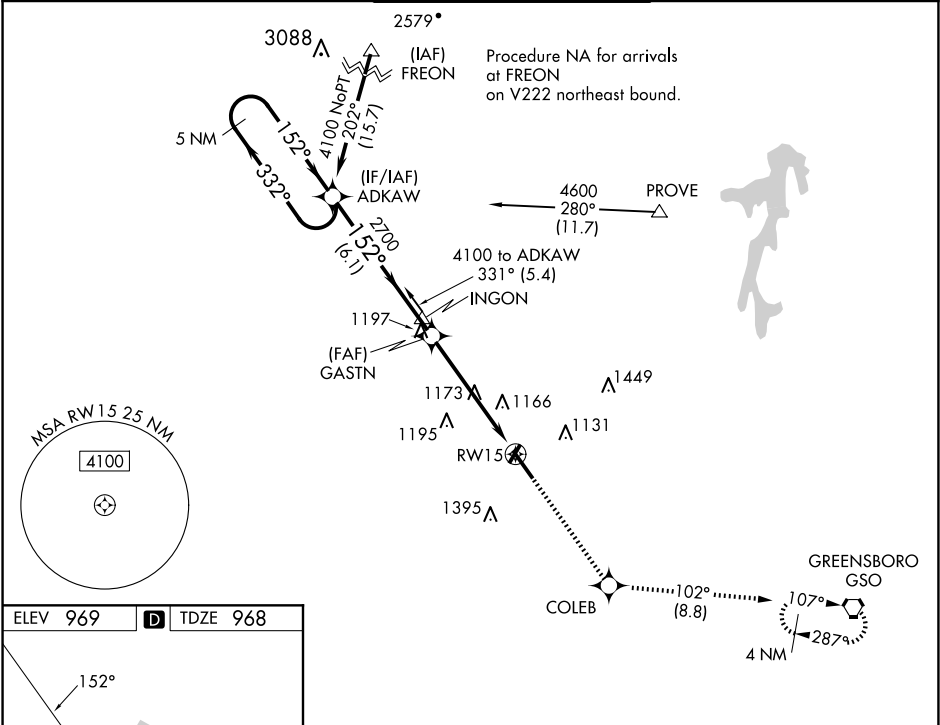
APP CRS  
**152°**

Rwy Idg  
TDZE  
Apt Elev

**6069**  
**968**  
**969**

**RNAV (GPS) RWY 15**  
SMITH REYNOLDS (INT')

RNP APCH.		MISSED APPROACH: Climb to 3000 direct COLEB and on track 102° to GSO VORTAC and hold.		
When local altimeter setting not received, use Piedmont Triad Intl altimeter setting and increase all MDA 40 feet and Circling Cats C/D visibility ¼ SM. Circling Rwy 4, 22 NA at night. Rwy 15 helicopter visibility reduction below ¾ SM NA.				
ATIS <b>121.3</b>	GREENSBORO APP CON <b>124.35 269.225</b>	WINSTON-TOWER ★ <b>123.75 (CTAF) 0 257.8</b>	GND CON <b>128.25</b>	UNICOM <b>122.95</b>



VGSI and descent angles not coincident (VGSI Angle 3.00/TCH 38).

3000	COLEB	tr 102°	GSO
------	-------	---------	-----

5 NM Holding Pattern

4100 ← 332° 152° →

ADKAW

152°

GASTN

2700

3.00° TCH 56

RW15

6.1 NM 5.2 NM

CATEGORY	A	B	C	D
LNAV MDA	1440-1	472 (500-1)	1440-1¾	472 (500-1¾)
CIRCLING	1480-1 511 (600-1)	1580-1 611 (700-1)	1700-2 731 (800-2)	1760-2½ 791 (800-2½)