

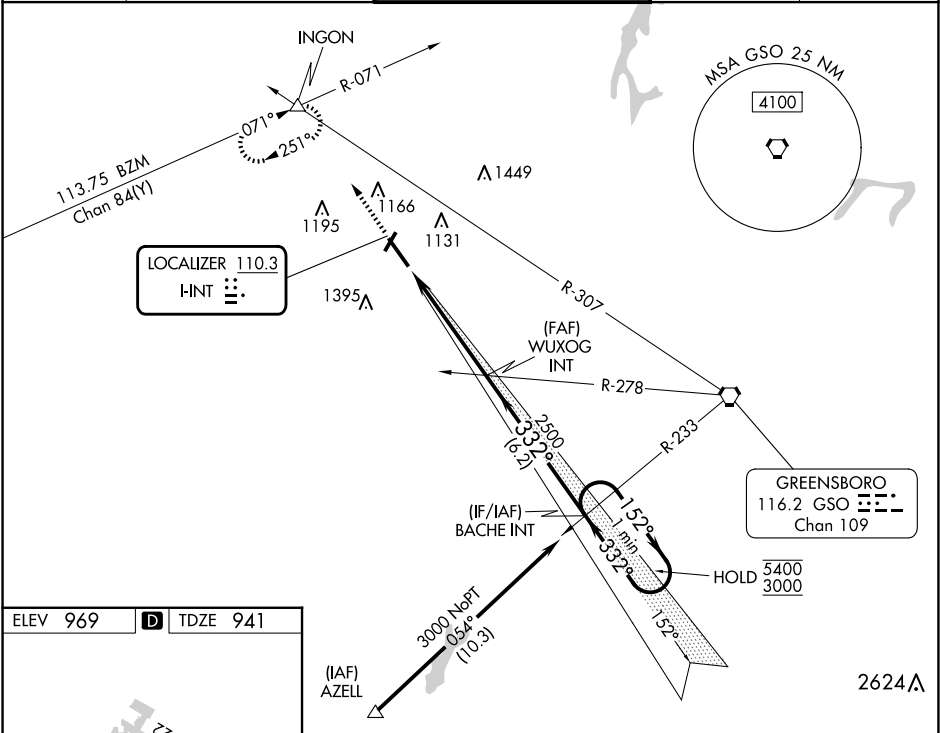
LOC I-INT 110.3	APP CRS 332°	Rwy Idg 6655 TDZE 941 Apt Elev 969
---------------------------	------------------------	---

ILS or LOC RWY 33

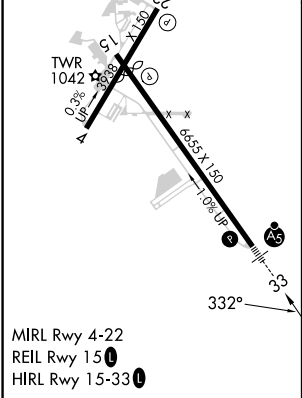
SMITH REYNOLDS (INT)

RNP APCH-GPS. From AZELL.		MALSR	MISSED APPROACH: Climb to 1400 then climbing right turn to 3500 on heading 341° and GSO VORTAC R-307 to INCON INT and hold, continue climb-in-hold to 3500.
RADAR required for non-GPS equipped aircraft.			
<div><div><div><div><div></div><div></div></div><div><div></div><div></div></div></div><div><div><div></div><div></div></div><div><div></div><div></div></div></div></div><div><div><div></div><div></div></div><div><div></div><div></div></div></div></div>	*RVR 1800 authorized with use of FD or AP or HUD to DA.		

ATIS 121.3	GREENSBORO APP CON 124.35 269.225	WINSTON-SALEM TOWER ★ 123.75 (CTAF) 0 257.8	GND CON 128.25	UNICOM 122.95
----------------------	---	---	--------------------------	-------------------------



ELEV 969	D	TDZE 941
----------	----------	----------



1400	3500	INGON	One Minute Holding Pattern	
↑	hdg 341°	GSO R-307	WUXOG INT	BACHE INT
RW33		2500	2500	152° 5400
4.8 NM		6.2 NM	332°	3000
GS 3.00° TCH 57				
CATEGORY	A	B	C	D
S-ILS 33*	1141/24 200 (200-½)			
S-LOC 33	1400/24	459 (500-½)	1400/45	459 (500-¾)
CIRCLING	1480-1 511 (600-1)	1580-1 611 (700-1)	1700-2 731 (800-2)	1760-2½ 791 (800-2½)