

VORTAC INK 112.1 Chan 58	APP CRS 150°	Rwy Idg TDZE 2822 Apt Elev 2822
--	------------------------	---

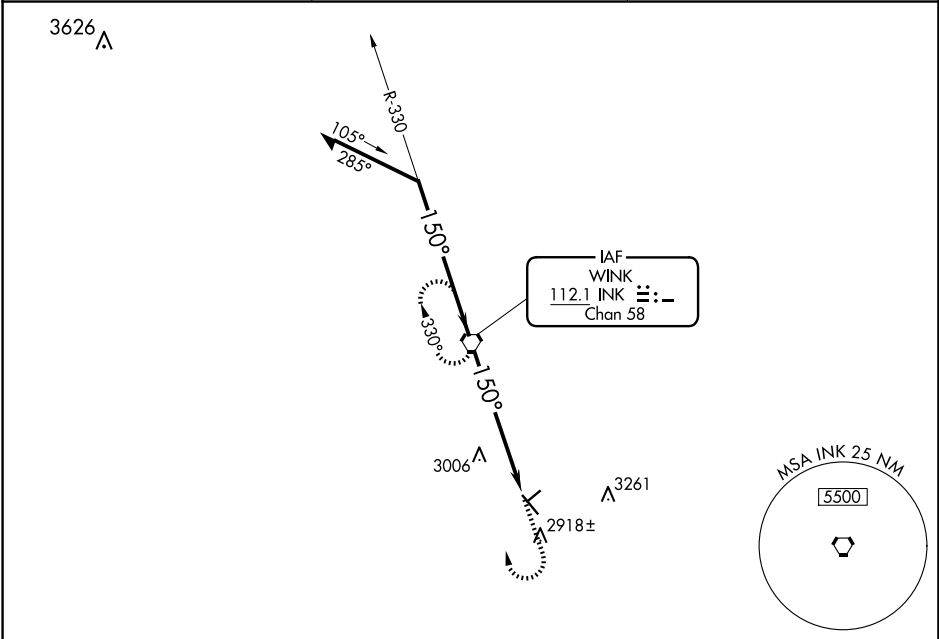
VOR RWY 13
WINKLER COUNTY (INK)

▼

▲

MISSED APPROACH: Climb to 3500 then climbing right turn to 5000 direct INK VORTAC and hold, continue climb-in-hold to 5000.

ASOS 118.325	FORT WORTH CENTER 133.1 298.95	UNICOM 123.0 (CTAF) 0
------------------------	--	--



ELEV 2822

TDZE 2822

Remain within 10 NM

CATEGORY	A	B	C	D
S-13	3340-1	518 (600-1)	3340-1⅓ 518 (600-1⅓)	NA
CIRCLING	3340-1	518 (600-1)	3580-2¼ 758 (800-2¼)	NA

MIRL Rwy 4-22 and 13-31 **0**

FAF to MAP 5.8 NM

Knots	60	90	120	150	180
Min:Sec	5:48	3:52	2:54	2:19	1:56

SC-3, 10 JUL 2025 to 07 AUG 2025

SC-3, 10 JUL 2025 to 07 AUG 2025