

WAAS CH 93831 W13A	APP CRS 132°	Rwy Idg TDZE Apt Elev	5003 2822 2822
--	------------------------	-----------------------------	---

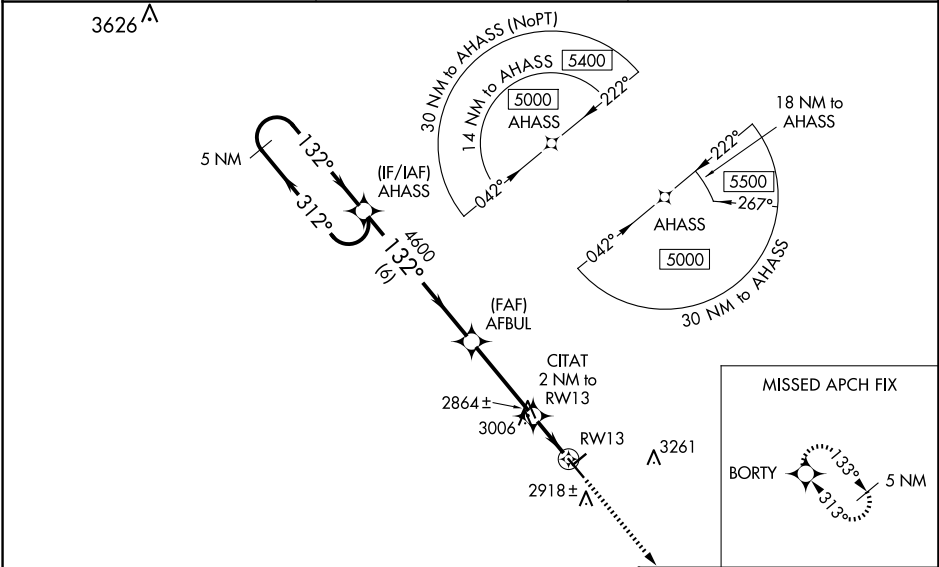
RNAV (GPS) RWY 13
WINKLER COUNTY (INK)

RNP APCH - GPS.

T Baro-VNAV NA when using Pecos altimeter setting. For uncompensated Baro-VNAV systems, LNAV/VNAV NA below -20°C or above 54°C. VDP NA with Pecos altimeter setting. Rwy 13 helicopter visibilities reduction below ¾ SM NA. When local altimeter setting not received, use Pecos altimeter setting: increase LPV DA to 3167 feet and all Cats visibilities ¼ SM; increase LNAV/VNAV DA to 3167 feet and all Cats visibilities ¼ SM; increase all MDAs 100 feet and LNAV Cat C visibility ¾ SM and Circling Cat C visibility ¼ SM.

MISSED APPROACH:
Climb to 5000 direct BORTY and hold.

ASOS 118.325	FORT WORTH CENTER 133.1 298.95	UNICOM 123.0 (CTAF) 0
------------------------	--	---------------------------------



<div>5 NM Holding Pattern AHASS</div> <div>5000 ← 312° 132° → 4600</div> <div>AFBUL 4600</div> <div>CITAT 2 NM to RW13</div> <div>0.8 NM to RW13</div> <div>5000 BORTY</div> <div>GP 3.00° TCH 45</div> <div>6 NM 3.4 NM 1.2 NM 0.8 NM</div>					<div>ELEV 2822 TDZE 2822</div> <div>132°</div> <div>3514 X 100</div> <div>5003 X 100</div> <div>31</div>	
CATEGORY	A	B	C	D		
LPV DA	3072-¾ 250 (300-¾)				NA	
LNAV/VNAV DA	3072-¾ 250 (300-¾)				NA	
LNAV MDA	3320-1	498 (500-1)	3320-1⅜ 498 (500-1⅜)			NA
CIRCLING	3320-1	498 (500-1)	3580-2¼ 758 (800-2¼)			NA

MIRL Rwy 4-22 and 13-31

MIRL Rwy 4-22 and 13-31 0