

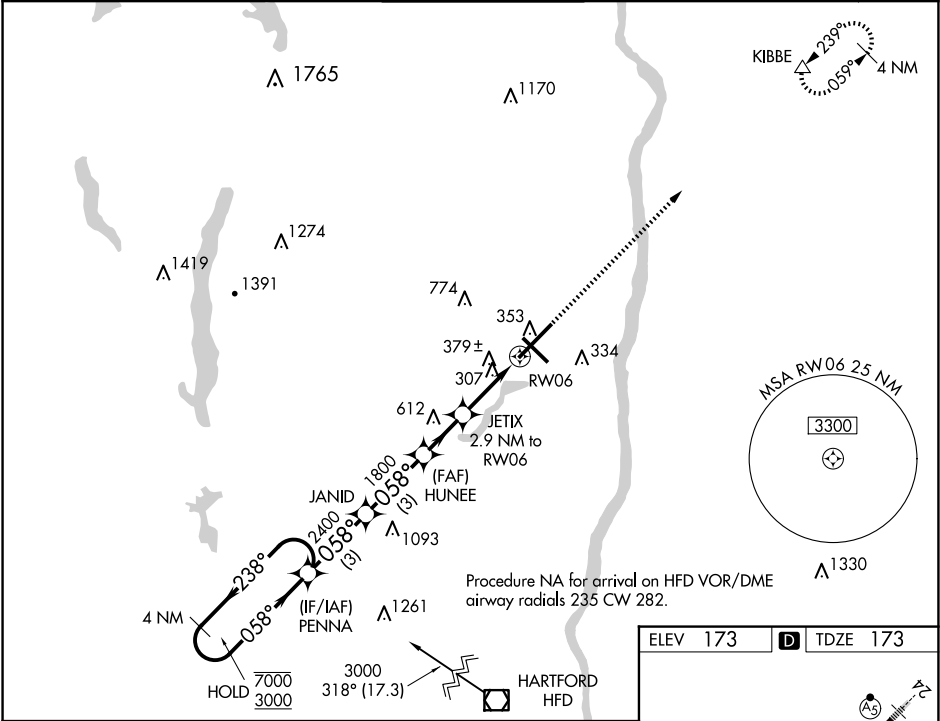
WAAS CH 70328 W06A	APP CRS 058°	Rwy Idg TDZE Apt Elev	9509 173 173
--	------------------------	-----------------------------	---

RNAV (GPS) Y RWY 6

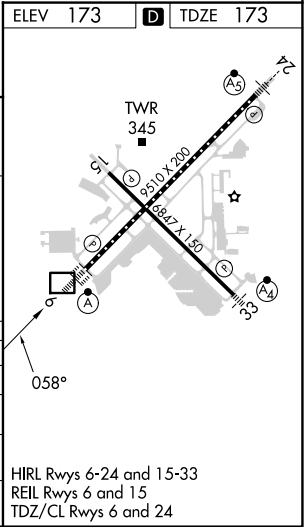
BRADLEY INTL (BDL)

RNP APCH - GPS.		ALSIF-2	MISSED APPROACH: Climb to 3000 direct KIBBE and hold.
<div><div></div>For uncompensated Baro-VNAV systems, LNAV/VNAV NA below -17°C or above 54°C.</div>		<div><div></div></div>	

D-ATIS 118.15	BRADLEY APP CON 123.95 290.55 (061°-240°) 125.35 281.5 (241°-060°)	BRADLEY TOWER 120.3 351.8	GND CON 121.9 348.6	CLNC DEL 121.75 322.3	CPDLC
-------------------------	--	-------------------------------------	-------------------------------	---------------------------------	-------



4 NM Holding Pattern		VGSI and RNAV glidepath not coincident (VGSI Angle 3.00/TCH 71).		3000	KIBBE
<div><div>7000</div><div>3000</div><div>GP 3.00° TCH 54</div></div>		PENNA	JANID	HUNEE	JETIX
				1800	2.9 NM to RW06
				1160	1.2 NM to RW06
					RW06
CATEGORY	A	B	C	D	
LPV DA	373/18 200 (300-½)				
LNAV/VNAV DA	640/50 467 (500-1)				
LNAV MDA	640/24	467 (500-½)	640/50	467 (500-1)	
CIRCLING	700-1	527 (600-1)	1120-2¾ 947 (1000-2¾)	1220-3 1047 (1100-3)	



NE-1, 10 JUL 2025 to 07 AUG 2025

NE-1, 10 JUL 2025 to 07 AUG 2025