

APP CRS	Rwy Idg	9509
238°	TDZE	170
	Apt Elev	173

RNAV (RNP) Z RWY 24
BRADLEY INTL (BDL)

For uncompensated Baro-VNAV systems, procedure NA below -18°C (0°F) or above 54°C (130°F). GPS required.
For inop ALS, increase all Cats visibility to 1½ SM.

MALSR

MISSED APPROACH: Climb to 3000 on track 238° to PENNA and hold.

D-ATIS
118.15

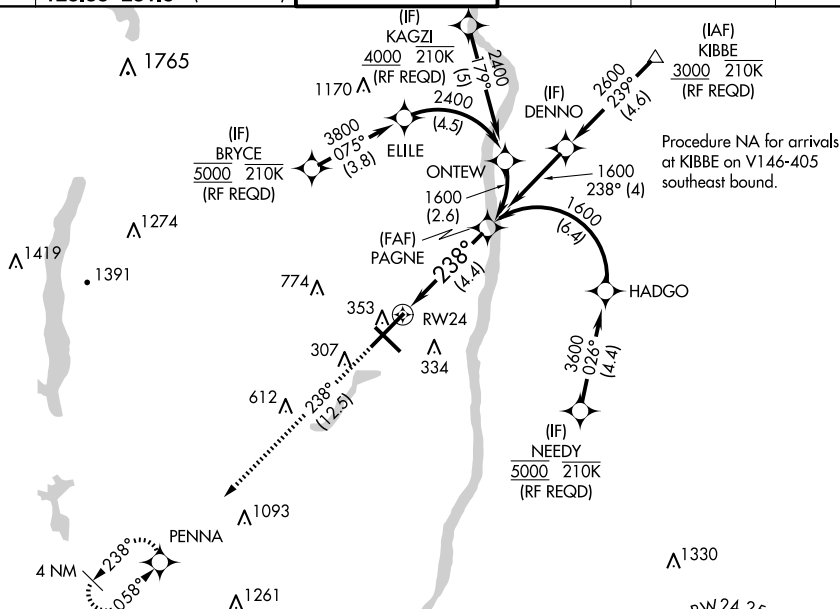
BRADLEY APP CON
123.95 290.55 (061°-240°)
125.35 281.5 (241°-060°)

BRADLEY TOWER
120.3 351.8

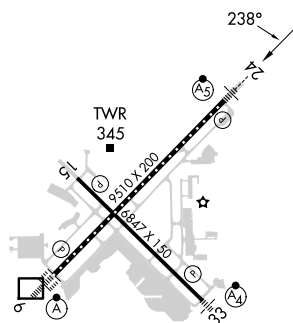
GND CON
121.9 348.6


CLNC DEL
121.75 322.3

CPDLC



ELEV 173	D	TDZE 170
----------	----------	----------



3000 ↑ tr 238°	PENNA 
----------------------	--

VGSI and RNAV glidepath not coincident (VGSI Angle 3.00/TCH 71).

PAGNE
|

1600

GP 3.00°
TCH 55

TDZ/CL Rwy 6 and 24
HIRL Rwys 6-24 and 15-33
REIL Rwys 6 and 15

AUTHORIZATION REQUIRED