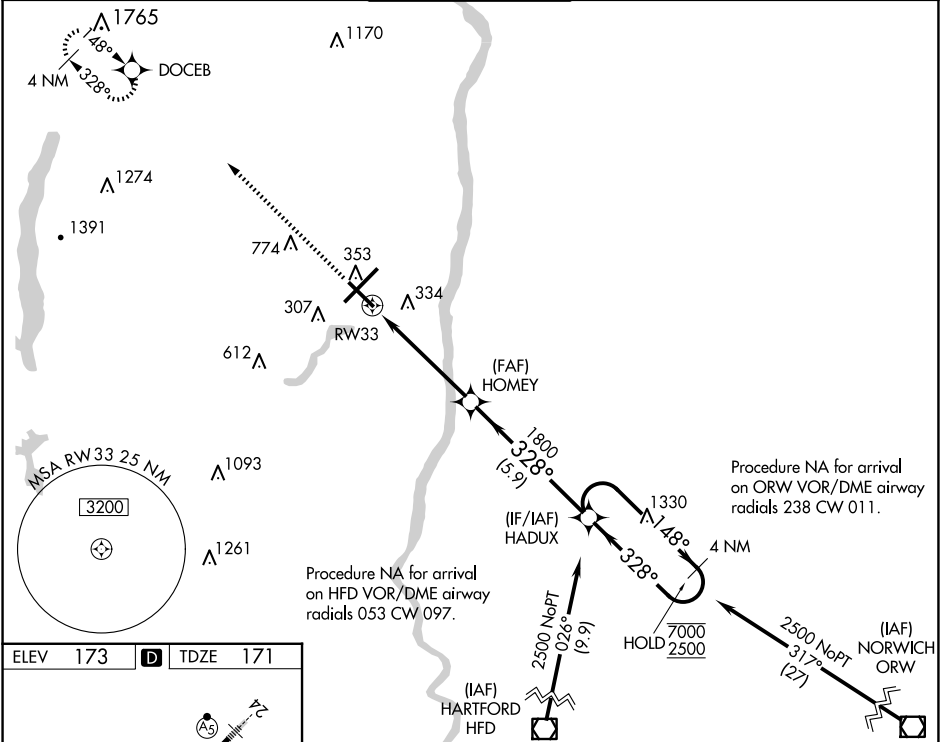


WAAS CH 65628 W33A	APP CRS 328°	Rwy Idg TDZE Apt Elev	6847 171 173
--	------------------------	-----------------------------	---

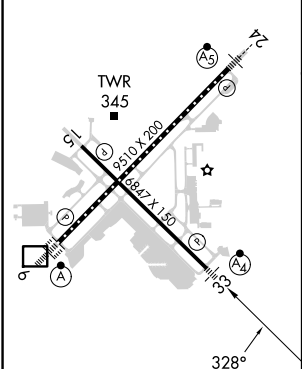
RNAV (GPS) RWY 33

BRADLEY INTL (BDL)

RNP APCH - GPS.		MALSF 	MISSED APPROACH: Climb to 3500 direct DOCEB and hold, continue climb-in-hold to 3500.		
	Inop table does not apply to LPV. For uncompensated Baro-VNAV systems, LNAV/VNAV NA below -17°C or above 54°C.				
D-ATIS 118.15	BRADLEY APP CON 123.95 290.55 (061°-240°) 125.35 281.5 (241°-060°)	BRADLEY TOWER 120.3 351.8	GND CON 121.9 348.6	CLNC DEL 121.75 322.3	CPDLC



ELEV 173	D	TDZE 171
----------	----------	----------



HIRL Rwy 6-24 and 15-33
REIL Rwy 6 and 15
TDZ/CL Rwy 6 and 24

3500 ↑ DOCEB		VGSI and RNAV glidepath not coincident (VGSI Angle 3.00/TCH 72).		HADUX		4 NM Holding Pattern	
		HOMEY 1800		148° → 7000 ← 328° 2500		GP 3.00° TCH 59	
1 NM		3.9 NM		5.9 NM			
CATEGORY	A		B		C		D
LPV DA			371/40		200 (200-¾)		
LNAV/ VNAV	DA		463/40		292 (300-¾)		
LNAV MDA	560/40		389 (400-¾)		560/45		389 (400-¾)
CIRCLING	700-1		527 (600-1)		1120-2¾ 947 (1000-2¾)		1220-3 1047 (1100-3)

NE-1, 10 JUL 2025 to 07 AUG 2025

NE-1, 10 JUL 2025 to 07 AUG 2025