

WILMINGTON, NORTH CAROLINA

AL-459 (FAA)

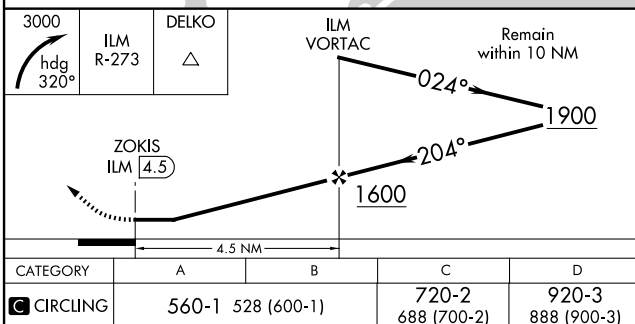
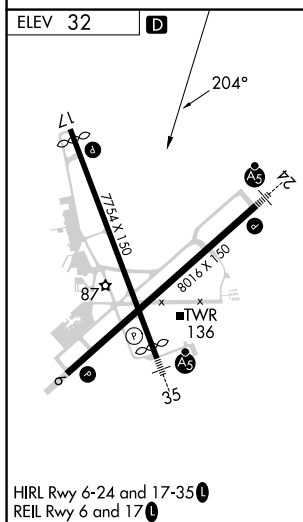
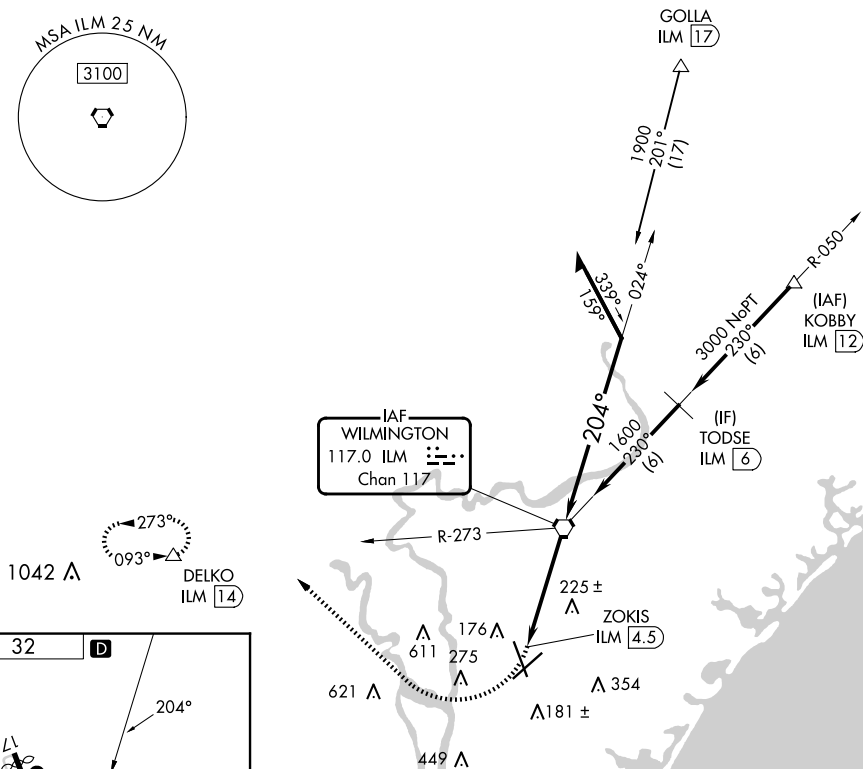
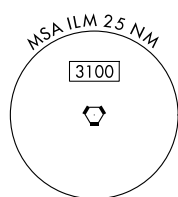
24361

VORTAC ILM <b>117.0</b> Chan <b>117</b>	APP CRS <b>204°</b>	Rwy Idg TDZE Apt Elev	<b>N/A</b> <b>N/A</b> <b>32</b>
---	------------------------	-----------------------------	---------------------------------------

TACAN-A  
WILMINGTON INTL (ILM)

**MISSED APPROACH:** Climbing right turn to 3000 heading 320° and ILM R-273 to DELKO/ILM 14 DME and hold.

ATIS <b>124.975</b>	WILMINGTON APP CON★ <b>118.25 284.65</b> (164°-343°) <b>135.75 317.425</b> (344°-163°)	WILMINGTON TOWER★ <b>119.9</b> (CTAF) <b>0 239.3</b>	GND CON <b>121.9 348.6</b>	CLNC DEL <b>120.875</b>	UNICOM <b>122.95</b>
------------------------	--	---	-------------------------------	----------------------------	-------------------------



WILMINGTON, NORTH CAROLINA  
Amdt 1 10DEC15

34°16'N-77°54'W

WILMINGTON INTL (ILM)  
TACAN-A

SE-2, 10 JUL 2025 to 07 AUG 2025

SE-2, 10 JUL 2025 to 07 AUG 2025