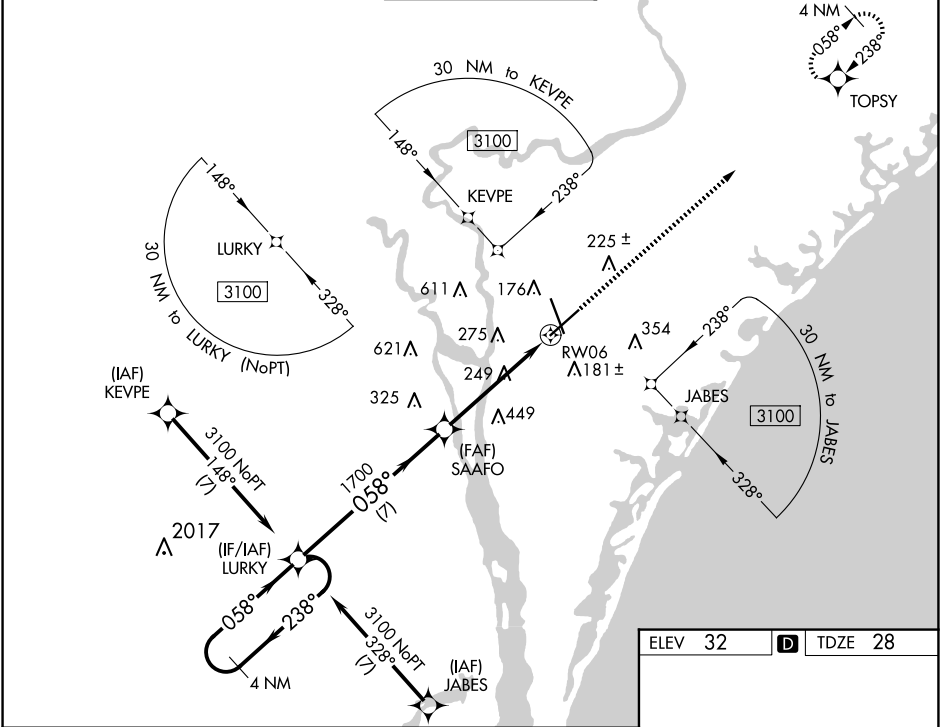


WAAS CH 86599 W06A	APP CRS 058°	Rwy Idg TDZE 28 Apt Elev 32	8016
----------------------------------------	------------------------	-------------------------------------------------	-------------

RNAV (GPS) RWY 6

WILMINGTON INTL (ILM)

<div><div><div></div><div></div></div></div> <div>For uncompensated Baro-VNAV systems, LNAV/VNAV NA below -7°C (20°F) or above 54°C (130°F). DME/DME RNP-0.3 NA.</div>		MISSED APPROACH: Climb to 2000 direct TOPSY and hold.			
ATIS 124.975	WILMINGTON APP CON★ 118.25 284.65 (164°-343°) 135.75 317.425 (344°-163°)	WILMINGTON TOWER★ 119.9 (CTAF) 0 239.3	GND CON 121.9 348.6	CLNC DEL 120.875	UNICOM 122.95



4 NM Holding Pattern LURKY		VGSI and RNAV glidepath not coincident (VGSI Angle 3.00/TCH 57).		2000	TOPSY
3100 ← 238° 058° →		058°		*LNAV only.	
GP 3.00° TCH 60		1700		*1.3 NM to RW06	
		7 NM		3.8 NM	
				1.3 NM	
CATEGORY	A	B	C	D	
LPV DA	228/40		200 (200-¾)		
LNAV/VNAV DA	434/60		406 (500-1¼)		
LNAV MDA	500/55 472 (500-1)		500-1⅜ 472 (500-1⅜)		
CIRCLING	560-1 528 (600-1)		720-2 688 (700-2)		920-3 888 (900-3)

