

WAAS CH 50499 W35A	APP CRS 349°	Rwy Idg 7204 TDZE 31 Apt Elev 32
--	------------------------	---

RNAV (GPS) RWY 35

WILMINGTON INTL (ILM)

⚠

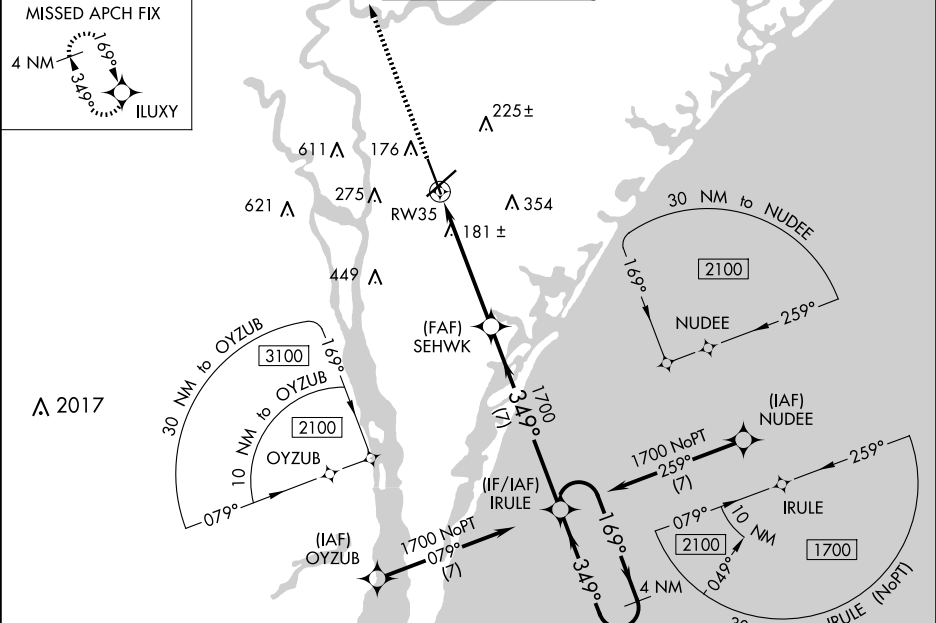
For uncompensated Baro-VNAV systems, LNAV/VNAV NA below -7°C (20°F) or above 54°C (130°F). DME/DME RNP-0.3 NA. For inop ALS, increase LNAV Cats C/D visibility to 1½ SM.

MALSR

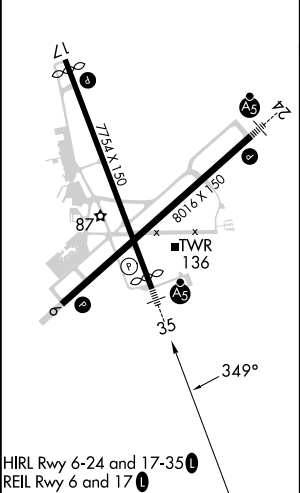
MISSED APPROACH:

Climb to 3000 direct ILUXY and hold.

ATIS 124.975	WILMINGTON APP CON★ 118.25 284.65 (164°-343°) 135.75 317.425 (344°-163°)	WILMINGTON TOWER★ 119.9 (CTAF) 0 239.3	GND CON 121.9 348.6	CLNC DEL 120.875	UNICOM 122.95
------------------------	--	---	-------------------------------	----------------------------	-------------------------



ELEV 32	D	TDZE 31
---------	----------	---------



3000 ILUXY

SEHWK 1700

IRULE 1700

4 NM Holding Pattern

*LNAV only.

GP 3.00°
TCH 37

CATEGORY	A	B	C	D
LPV DA	242/24 211 (300-½)			
LNAV/VNAV DA	426/45 395 (400-¾)			
LNAV MDA	500/24	469 (500-½)	500/50	469 (500-1)
CIRCLING	560-1	528 (600-1)	720-2 688 (700-2)	920-3 888 (900-3)