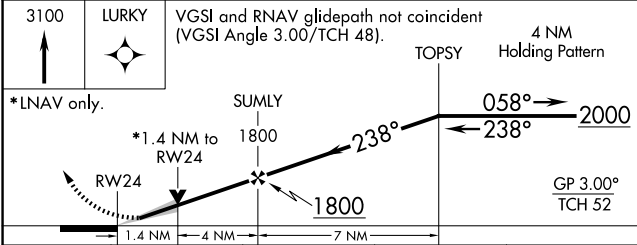
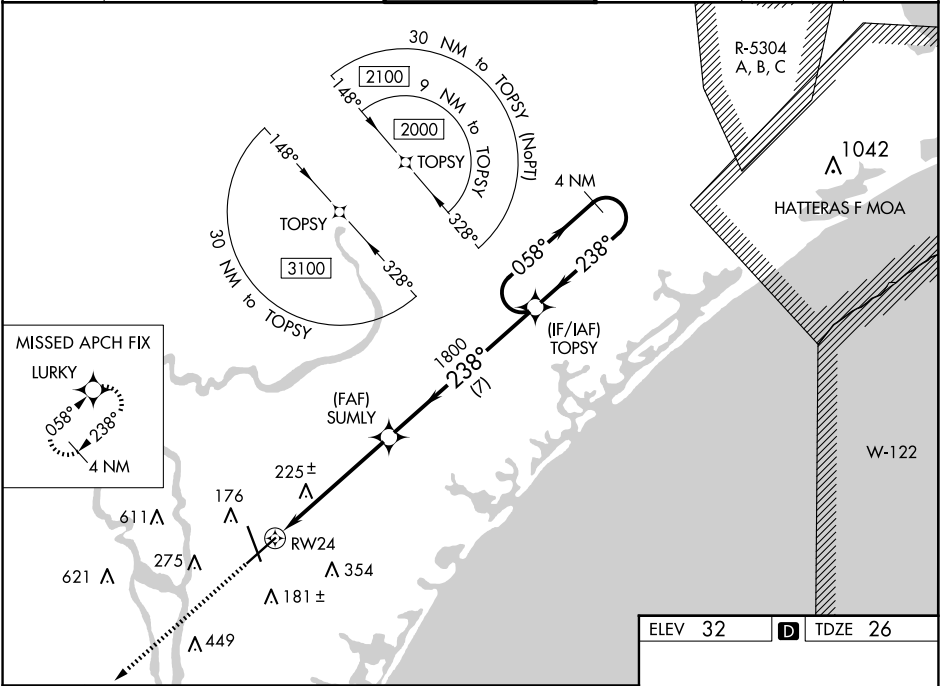


WAAS CH <b>45899</b> <b>W24A</b>	APP CRS <b>238°</b>	Rwy Idg TDZE <b>26</b> Apt Elev <b>32</b>
--	------------------------	---

RNAV (GPS) RWY 24

WILMINGTON INTL (ILM)

<div><div><div></div><div></div></div></div> <div>For uncompensated Baro-VNAV systems, LNAV/VNAV NA below -7°C (20°F) or above 54°C (130°F). DME/DME RNP-0.3 NA. ** RVR 1800 authorized with use of FD or AP or HUD to DA.</div>		<div>MALSR</div> <div><div></div><div></div></div>	MISSED APPROACH: Climb to 3100 direct LURKY and hold.		
ATIS 124.975	WILMINGTON APP CON★ 118.25 284.65 (164°-343°) 135.75 317.425 (344°-163°)	WILMINGTON TOWER★ 119.9 (CTAF) 0 239.3	GND CON 121.9 348.6	CLNC DEL 120.875	UNICOM 122.95



CATEGORY	A	B	C	D
LPV DA **	226/24 200 (200-½)			
LNAV/VNAV DA	401/40 375 (400-¾)			
LNAV MDA	500/24 474 (500-½)	500/50 474 (500-1)		
CIRCLING	560-1 528 (600-1)	720-2 688 (700-2)	920-3 888 (900-3)	

