

LOC I-ILM <u>110.3</u>	APP CRS 349°	Rwy Idg 7204 TDZE 31 Apt Elev 32
----------------------------------	------------------------	---

ILS Y or LOC RWY 35
WILMINGTON INTL (ILM)

ADF required. RADAR required for procedure entry.

MALSR

MISSED APPROACH: Climb to 600 then climbing left turn to 1800 direct AIRL LOM and hold.

ATIS
124.975

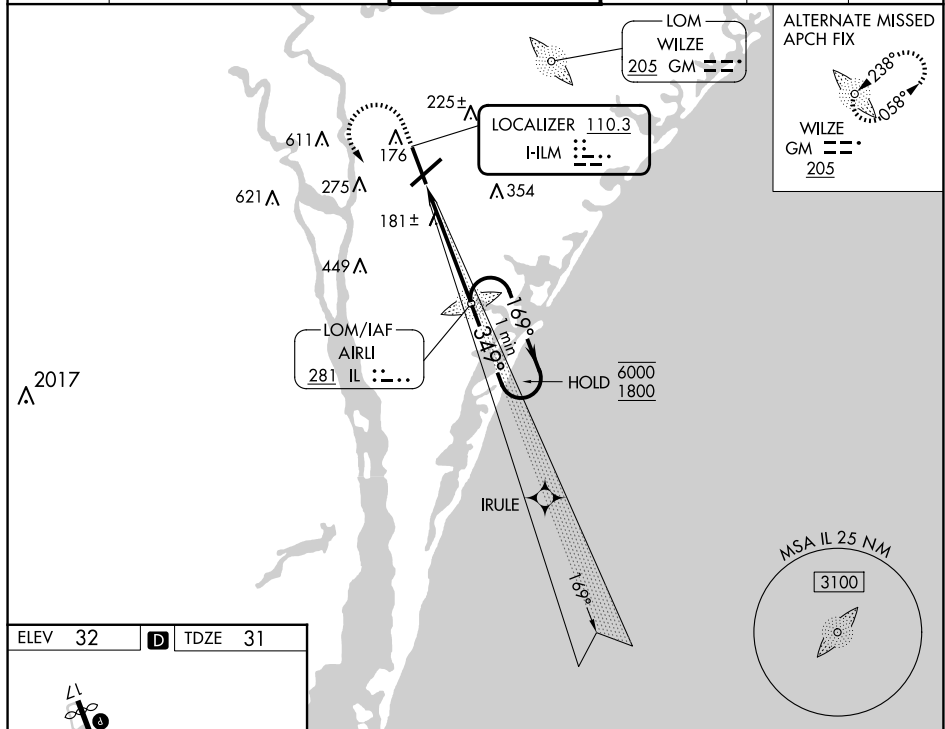
WILMINGTON APP CON★
118.25 284.65 (164°-343°)
135.75 317.425 (344°-163°)

WILMINGTON TOWER ★
119.9 (CTAF) **L** 239.3

121,9 348,6

CLNC DEL
120.875

122.95



HIRL Rwy 6-24 and 17-35
REIL Rwy 6 and 17

	FAF to MAP 4.7 NM				
Knots	60	90	120	150	180
Min:Sec	4:38	3:06	2:19	1:51	1:33

