

LOC I-GMX	APP CRS	Rwy Idg	8016
111.55	238°	TDZE	26
		Apt Elev	32

ILS Y RWY 24 (SA CAT I & II)

WILMINGTON INTL (ILM)

▼

ADF required. SA CAT I: Requires specific OPSPEC, MSPEC, or LOA approval and use of HUD to DH. SA CAT II: Reduced lighting: requires specific OPSPEC, MSPEC, or LOA approval and use of autoland or HUD to touchdown. Procedure NA when tower closed.

MALSR

MISSED APPROACH: Climb to 500 then climbing right turn to 1800 direct WILZE LOM and hold.

ATIS	WILMINGTON APP CON★	WILMINGTON TOWER★	GND CON	CLNC DEL	UNICOM
124.975	118.25 284.65 (164°-343°) 135.75 317.425 (344°-163°)	119.9 (CTAF) 0 239.3	121.9 348.6	120.875	122.95

ALTERNATE MISSED APCH FIX

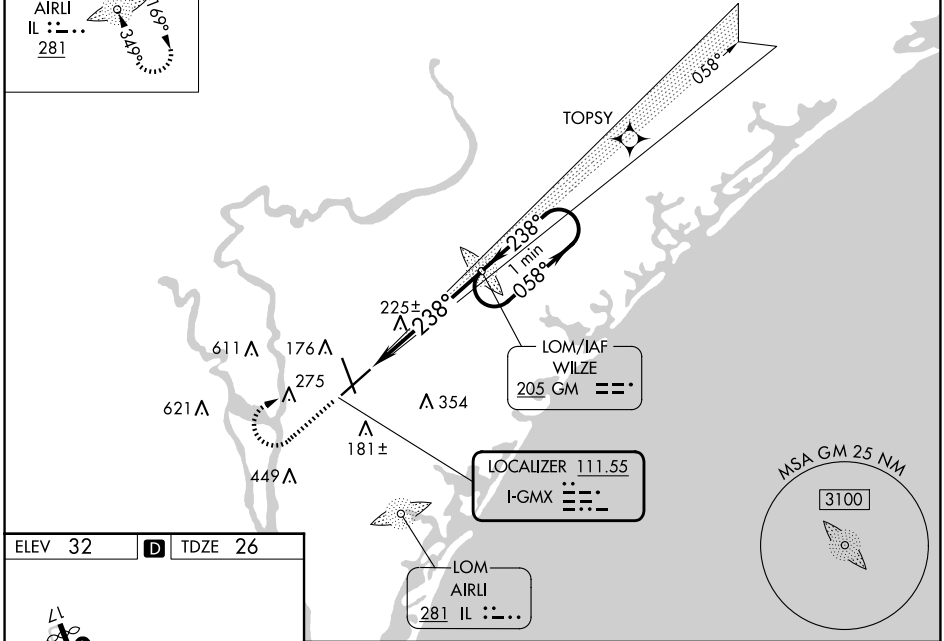
AIRLI

IL : - . .

281

RNAV 1-GPS or RADAR REQUIRED

1042 Δ

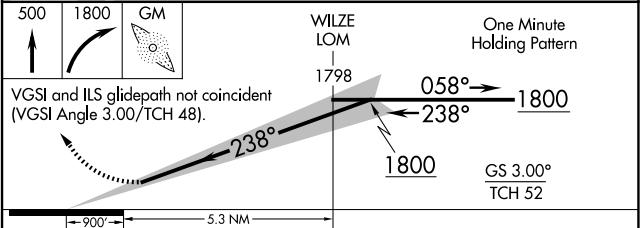


ELEV 32 D TDZE 26

HIRL Rwy 6-24 and 17-35  
REIL Rwy 6 and 17

FAF to MAP 5.3 NM

Knots	60	90	120	150	180
Min:Sec	5:18	3:32	2:39	2:07	1:46



CATEGORY	A	B	C	D
S-ILS 24	SA CAT I RA 151/14 150 DA 176			
S-ILS 24	SA CAT II RA 108/12 100 DA 126			

SA CATEGORY I & II ILS SPECIAL AIRCREW & AIRCRAFT CERTIFICATION REQUIRED