

VORTAC DQO	APP CRS	Rwy Idg	7000
114.0	261°	TDZE	72
Chan 87		Apt Elev	80

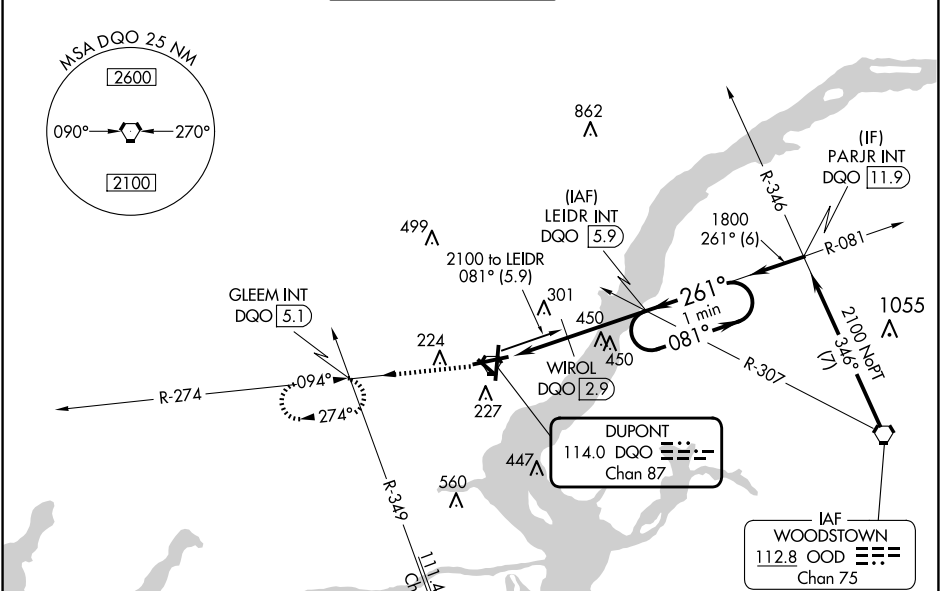
VOR RWY 27

NEW CASTLE (ILG)

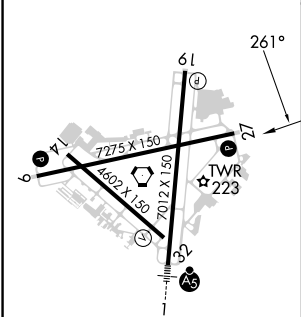
⚠ Helicopter visibility reduction below ¾ SM NA. When local altimeter setting not received, use Philadelphia Intl altimeter setting and increase all MDAs 60 feet; increase S-27 Cat B and Circling Cat C/D visibility ¼ SM and S-27 Cat C/D visibility ½ SM; WIROL fix minimums S-27 increase Cat C/D and Circling Cat D visibility ¼ SM.

MISSED APPROACH: Climb to 2000 on DQO VORTAC R-274 to GLEEM INT/DQO 5.1 DME and hold.

ATIS	PHILADELPHIA APP CON	WILMINGTON TOWER ★	GND CON	CLNC DEL	UNICOM
123.95	118.35 323.1	126.0 (CTAF) 352.05	121.7 275.8	119.95	122.95



ELEV 80	D	TDZE 72
---------	---	---------



REIL Rwy 9, 19 and 27	1
HIRL Rwy 1-19 and 9-27	1
MIRL Rwy 14-32	1
FAF to MAP 5.9 NM	
Knots	60 90 120 150 180
Min:Sec	5:54 3:56 2:57 2:22 1:58

<div>2000 ↑ DQO R-274</div>		<div>GLEEM INT</div>		<div>LEIDR INT DQO 5.9</div>		<div>One Minute Holding Pattern</div>	
<div>DQO VORTAC</div>		<div>WIROL DQO 2.9</div>		<div>261° 1800</div>		<div>081° → 2100 ← 261°</div>	
<div>800*</div>		<div>3.00 TCH 54</div>		<div>* 860 when using Philadelphia Intl altimeter setting.</div>			
<div>0.6 2.3</div>		<div>3 NM</div>					
CATEGORY	A		B		C		D
S-27	800-1 728 (800-1)				800-2 728 (800-2)		
CIRCLING	800-1 720 (800-1)				800-2 720 (800-2)		800-2 ¼ 720 (800-2 ¼)
WIROL FIX MINIMUMS (DME REQUIRED)							
S-27	560-1 488 (500-1)				560-1 ⅜ 488 (500-1 ⅜)		
CIRCLING	560-1 480 (500-1)				600-1 ½ 520 (600-1 ½)		800-2 ¼ 720 (800-2 ¼)