

| | | |
|--|------------------------|---|
| WAAS CH 53515 W27A | APP CRS 268° | Rwy ldg 7000 TDZE 72 Apt Elev 80 |
|--|------------------------|---|

RNAV (GPS) RWY 27

NEW CASTLE (ILG)

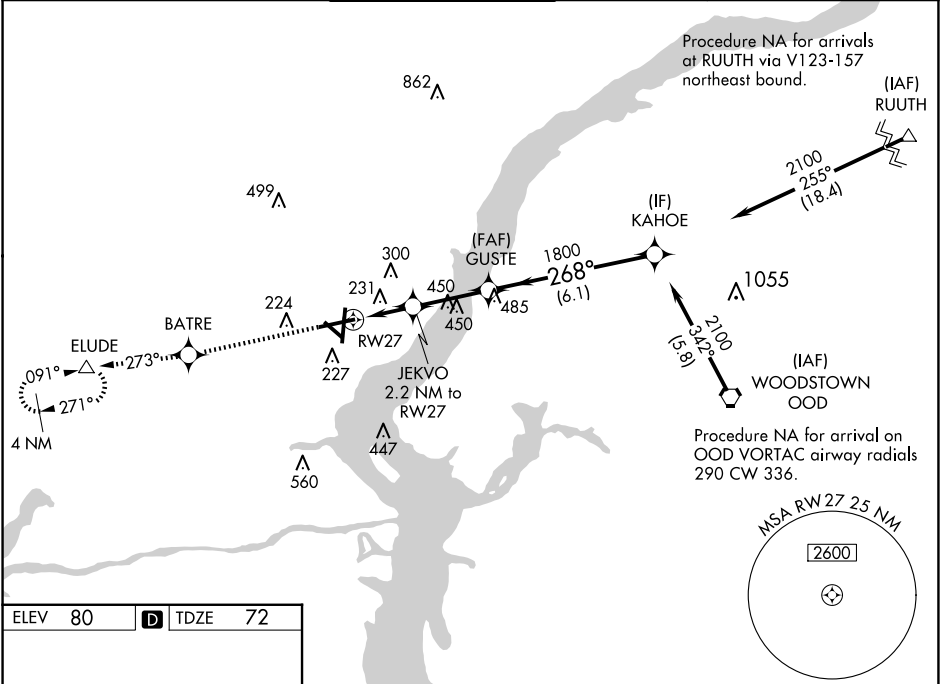
▼

▲

Baro-VNAV NA when using Philadelphia Intl altimeter setting. For uncompensated Baro-VNAV systems, LNAV/VNAV DA NA below -15°C (5°F) or above 39°C (102°F). DME/DME RNP-0.3 NA. Helicopter visibility reduction below ¾ SM NA. When local altimeter setting not received, use Philadelphia Intl altimeter setting: increase LPV DA to 480, LNAV/VNAV DA to 584, and all MDAs 60 feet; increase LPV all Cats and LNAV Cat C/D visibility ½ SM and LNAV/VNAV all Cats and Circling Cat D visibility ¼ SM.

MISSED APPROACH: Climb to 2000 direct BATRE and via track 273° to ELUDE and hold.

| | | | | | |
|-----------------------|---|--|-------------------------------|---------------------------|-------------------------|
| ATIS 123.95 | PHILADELPHIA APP CON 118.35 323.1 | WILMINGTON TOWER★ 126.00 (CTAF) 352.05 | GND CON 121.7 275.8 | CLNC DEL 119.95 | UNICOM 122.95 |
|-----------------------|---|--|-------------------------------|---------------------------|-------------------------|



ELEV 80

D

TDZE 72

REIL Rwy 9, 19 and 27
HIRL Rwy 1-19 and 9-27
MIRL Rwy 14-32

| | | | | | |
|--------------|----------------------|----------------------|------------------------|--|-------------------|
| 2000 | BATRE | tr 273° | ELUDE | VGSI and RNAV glidepath not coincident (VGSI Angle 3.00/TCH 54). | Procedure Turn NA |
| * LNAV only. | | | | | |
| | | | | | |
| CATEGORY | A | B | C | D | |
| LPV DA | 426-1⅛ | 354 (400-1⅛) | | | |
| LNAV/VNAV DA | 530-1⅜ | 458 (500-1⅜) | | | |
| LNAV MDA | 500-1 | 428 (500-1) | 500-1¼ | 428 (500-1¼) | |
| CIRCLING | 540-1 460 (500-1) | 560-1 480 (500-1) | 600-1½ 520 (600-1½) | 800-2¼ 720 (800-2¼) | |