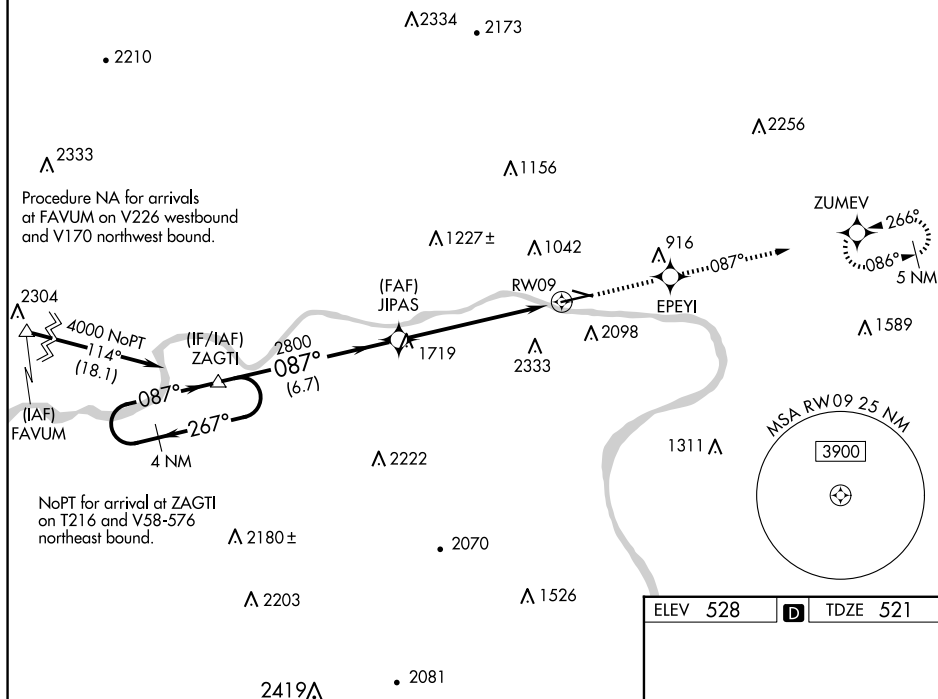






RNAV (GPS) RWY 9  
WILLIAMSPORT RGNL (IPT)

**MISSED APPROACH:** Climb to 4300 direct EPEYI and on track 087° to ZUMEV and hold, continue climb-in-hold to 4300.

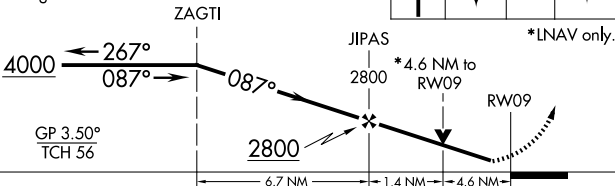
UNICOM  
122.954 NM  
Holding Pattern

VGSI and RNAV glidepath not coincident  
(VGSI Angle 3.00/TCH 49).

4300 	EPEYI 	tr 087° 	ZUMEV 
---	--	---	--

\*LNAV only.

\*LNAV only.



CATEGORY	A	B	C	D
LPV DA	1036-1½ 515 (600-1½)			NA
LNAV MDA	2040-1¼ 1519 (1600-1¼)	2040-1½ 1519 (1600-1½)	2040-3 1519 (1600-3)	NA
CIRCLING	2040-1¼ 1512 (1600-1¼)	2040-1½ 1512 (1600-1½)	2040-3 1512 (1600-3)	NA

REIL Rwy 9 **L**  
MIRL Rwy 12-30 **L**  
HIRL Rwy 9-27 **L**

NE-4, 10 JUL 2025 to 07 AUG 2025

NE-4. 10 JUL 2025 to 07 AUG 2025