

WILLIAMSPORT, PENNSYLVANIA




AL-457 (FAA)

23222

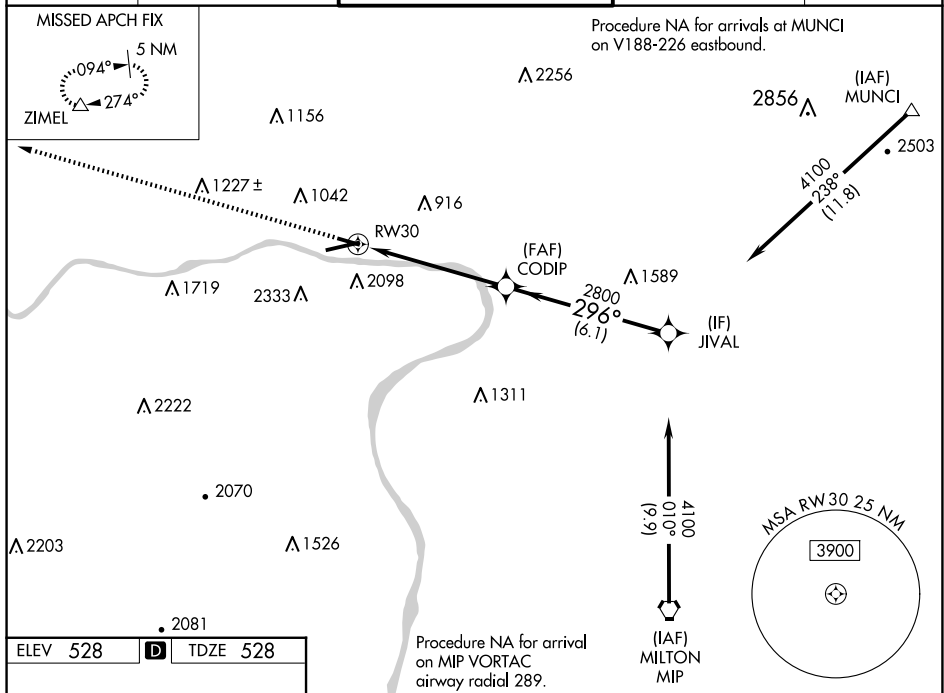
WAAS CH 93724 W30A	APP CRS 296°	Rwy Idg 4273 TDZE 528 Apt Elev 528
--	------------------------	---

RNAV (GPS) RWY 30

WILLIAMSPORT RGNL (IPT)

   -14°C	DME/DME RNP-0.3 NA. Helicopter visibility reduction below 1 SM NA. Circling NA south of Rwy 9 and southwest of Rwy 30. Night landing: Rwy 12, 30 NA.	MISSED APPROACH: Climb to 4500 direct ZIMEL and hold, continue climb-in-hold to 4500.
---	--	---

ASOS 125.225	NEW YORK CENTER 124.9	WILLIAMSPORT TOWER ★ 119.1 (CTAF) 0 257.8	GND CON 121.9	UNICOM 122.95
-----------------	--------------------------	--	------------------	------------------



VGSJ and RNAV glidepath not coincident
(VGSJ Angle 4.00/TCH 41).

ZIMEL

CODIP

JIVAL

RW30

2800

296°

4100

GP 3.77°
TCH 60

5.5 NM

6.1 NM

CATEGORY	A	B	C	D
LPV DA	843-1	315 (400-1)		NA
RNAV/ VNAV	2212-5	1684 (1700-5)		NA
RNAV MDA	2020-1¼ 1492 (1500-1½)	2020-1½ 1492 (1500-1½)		NA
CIRCLING	2020-1¼ 1492 (1500-1½)	2020-1½ 1492 (1500-1½)		NA

WILLIAMSPORT, PENNSYLVANIA

Orig-B 28APR16

41°15'N-76°55'W

WILLIAMSPORT RGNL (IPT)

RNAV (GPS) RWY 30

NE-4, 10 JUL 2025 to 07 AUG 2025