

LOC/DME I-IPT	APP CRS	Rwy Idg	6063
110.1	266°	TDZE	527
Chan 38		Apt Elev	528

ILS or LOC RWY 27

WILLIAMSPORT RGNL (IPT)

⚠ Inop table does not apply to S-ILS 27. Circling NA south of Rwy 9 and southwest of Rwy 30. Circling Rwy 12, 30 NA at night. Rwy 27 helicopter visibility reduction below ¾ SM NA. DME required.

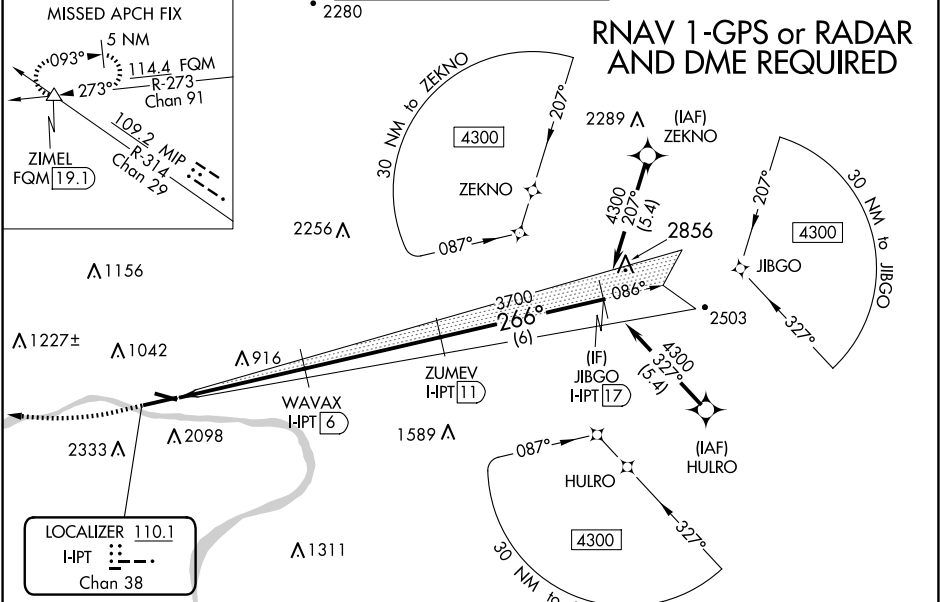
❄ -14°C

MALSR

⚠

MISSED APPROACH: Climb to 980 then climbing right turn to 4500 on heading 290° and on MIP VORTAC R-314 to ZIMEL INT/FQM 19.1 DME and hold, continue climb-in-hold to 4500.

ASOS 125.225	NEW YORK CENTER 124.9	WILLIAMSPORT TOWER ★ 119.1 (CTAF) 257.8	GND CON 121.9	UNICOM 122.95
-----------------	--------------------------	--	------------------	------------------



ELEV 528 **D** TDZE 527

266°

980
4500
hdg 290°

*LOC only.

*I-IPT 4.1

I-IPT 1.2

WAVAX I-IPT 6

ZUMEV I-IPT 11

JIBGO I-IPT 17

3700

4300

266°

*2100

3700

GS 3.00° TCH 48

2.9 NM 1.9 NM 5 NM 6 NM

CATEGORY	A	B	C	D
S-ILS 27	777-¾ 250 (300-¾)			
S-LOC 27	1500-¾ 973 (1000-¾)	1500-1 973 (1000-1)	1500-2½ 973 (1000-2½)	
C CIRCLING	1500-1¼ 972 (1000-1¼)	1500-1½ 972 (1000-1½)	1840-3 1312 (1400-3)	2060-3 1532 (1600-3)

REIL Rwy 9
MIRL Rwy 12-30
HIRL Rwy 9-27

NE-4, 10 JUL 2025 to 07 AUG 2025

NE-4, 10 JUL 2025 to 07 AUG 2025