

RNAV (GPS) RWY 33L

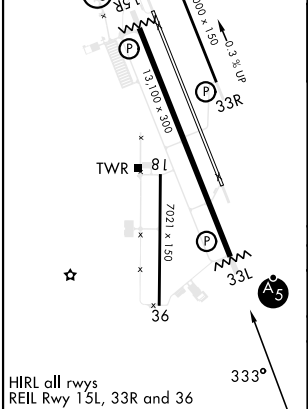
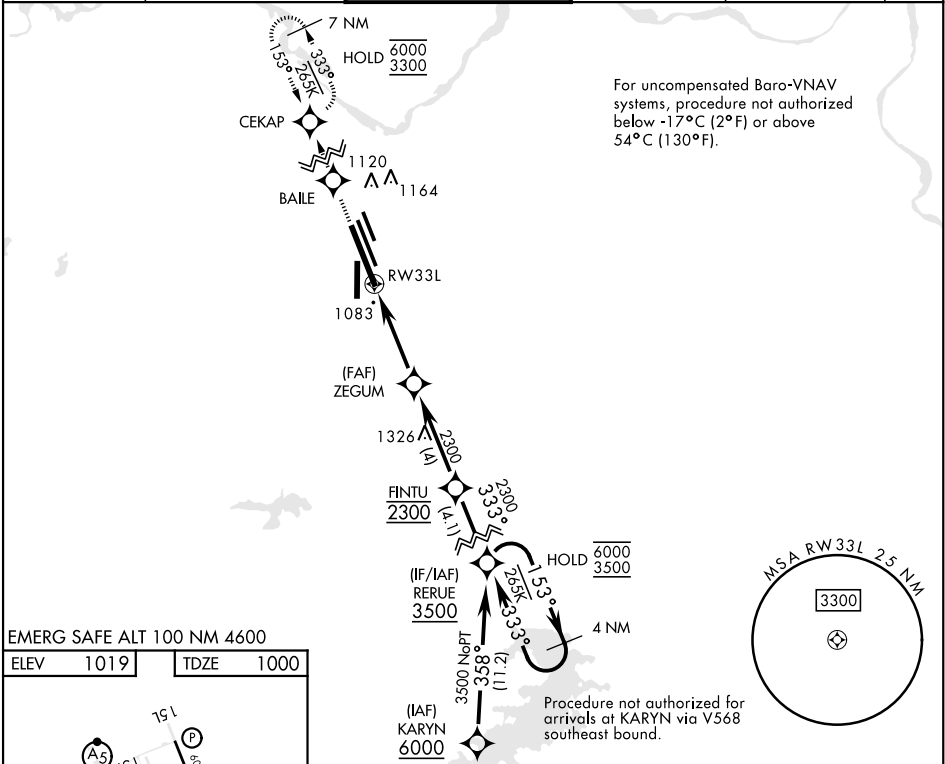
APCH CRS	Rwy ldg
333°	13.100
	TDZE
	1000
	Arpt Elev
	1019

[USAF]

SHEPPARD AFB/WICHITA FALLS MUNI (KSPS)

RNP APCH - GPS	MALSR A5	MISSED APPROACH: Climb to 3300 direct BAILE, track 333° to CEKAP and hold.
▼ * When ALS inop, increase vis to ¾ mile. ** When ALS inop, increase vis to 1 mile. *** Circling not authorized SW of Rwy 15R-33L.		

ATIS★	APP CON	TOWER★	GND CON	CLNC DEL	ASR
132.05 269.9	118.2 269.025	119.750 279.525(CTAF)	125.5 289.4	121.2 282.225	



3300	BAILE	CEKAP	VGSI and Glidepath not coincident (VGSI Angle 3.00/TCH 56).		
↑	✧	↑ tr 333°	4 NM	Holding Pattern	
ZEGUM			FINTU	RERUE	GP 3.06° TCH 48
RW33L			2300	2300	
CATEGORY	A	B	C	D	E
RNAV/VNAV DA *	1255-½		255		(300-½)
RNAV MDA **	1340-½		340		(400-½)
*** CIRCLING	1440-1 421 (500-1)	1480-1 461 (500-1)	1480-1½ 461 (500-1½)	2100-3 1081 (1100-3)	

RNAV (GPS) RWY 33L

SC-2, 10 JUL 2025 to 07 AUG 2025

SC-2, 10 JUL 2025 to 07 AUG 2025