

RNAV (GPS) RWY 15R

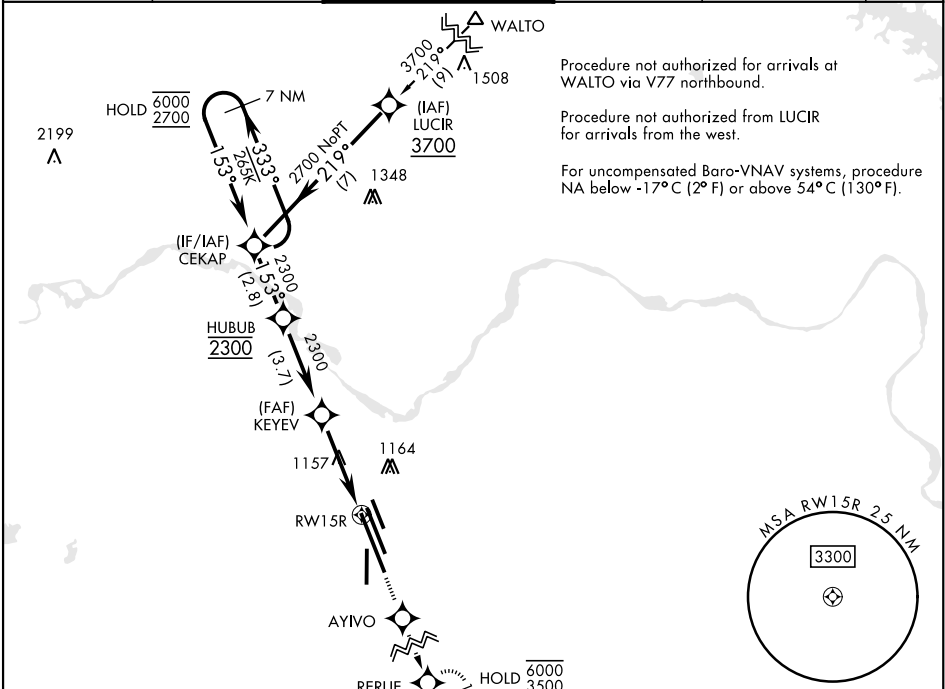
APCH CRS	Rwy ldg
153°	13,100
TDZE	998
Arpt Elev	1019

[USAF]

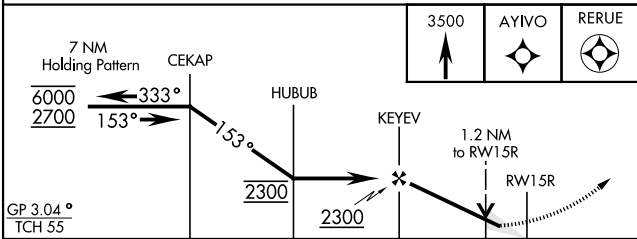
SHEPPARD AFB/WICHITA FALLS MUNI (KSPS)

RNP APCH - GPS	MALSR	MISSED APPROACH: Climb to 3500 direct AYIVO and via 153° track to RERUE and hold.
▼ * When ALS inop, increase CAT AB vis to ¾ mile; CAT CDE vis to ⅞ mile. ** When ALS inop, increase CAT AB vis to 1 mile; CAT CDE vis to 1¼ miles. *** Circling not authorized West of Rwy 15R-33L.	AS	

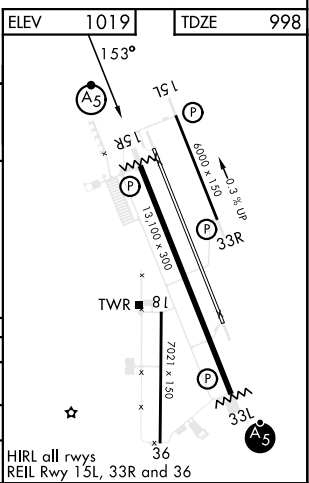
ATIS ★	APP CON	TOWER ★	GND CON	CLNC DEL	ASR
132.05 269.9	118.2 269.025	119.75 279.525 (CTAF)	125.5 289.4	121.2 282.225	



EMERG SAFE ALT 100 NM 4600



CATEGORY	A	B	C	D	E
RNAV/VNAV DA*	1249-½ 251 (300-½)	1252-½ 254 (300-½)	1260-½ 262 (300-½)	1271-½ 273 (300-½)	
RNAV MDA**	1420-½ 401 (500-1)	422 461 (500-1)	1420-¾ 461 (500-1½)	422 2100-3	1081 (1100-3)
CIRCLING***	1420-1 401 (500-1)	1480-1 461 (500-1)	1480-1½ 461 (500-1½)	2100-3	1081 (1100-3)



WICHITA FALLS, TEXAS

Amtd 5 23JAN25

33°59'N-98°30'W

SHEPPARD AFB/WICHITA FALLS MUNI

(KSPS)

RNAV (GPS) RWY 15R

SC-2, 10 JUL 2025 to 07 AUG 2025

SC-2, 10 JUL 2025 to 07 AUG 2025